

SR700 (A612)

PARTS CATALOG

INTRODUCTION

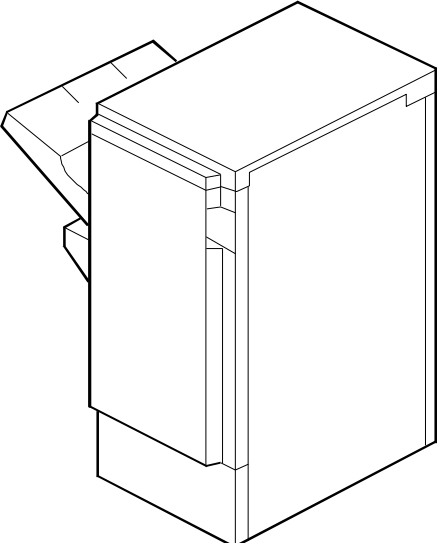
This chapter instructs you the numbers and names of parts on this machine.

INDEX to PARTS CATALOG

Location of Unit	3
1.EXTERIOR (A612)	6
2.TRANSPORT SECTION 1 (A612).....	8
3.TRANSPORT SECTION 2 (A612).....	10
4.STAPLER UNIT 1 (A612)	12
5.STAPLER UNIT 2 (A612)	14
6.STAPLER UNIT 3 (A612)	16
7.PAPER EXIT SECTION (A612).....	18
8.SHIFT TRAY SECTION (A612).....	20
9.DRIVE AND ELECTRICAL SECTION 1 (A612).....	22
10.DRIVE AND ELECTRICAL SECTION 2 (A612).....	24
11.FRAME SECTION	26
12.MAIN CONTROL BOARD (A612)	28
13.DECAL AND DOCUMENT (A612)	32
PARTS INDEX	35

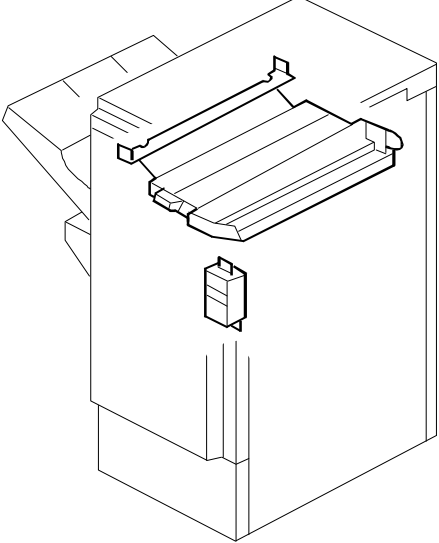
Location of Unit

1. EXTERIOR (A612)



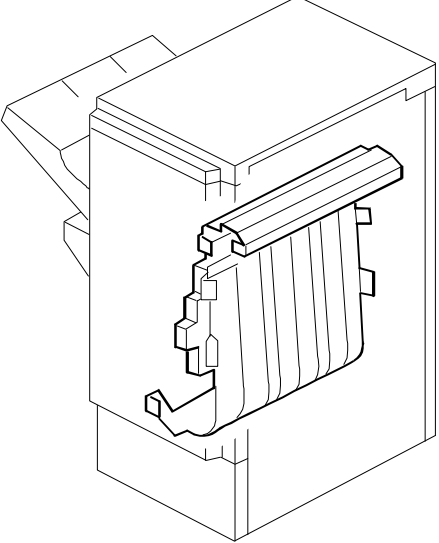
See Page 6

2. TRANSPORT SECTION 1 (A612)



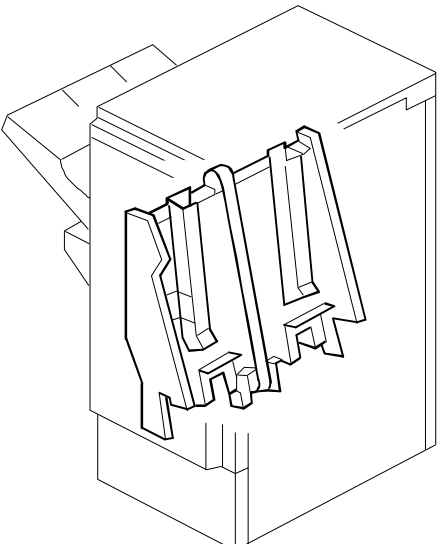
See Page 8

3. TRANSPORT SECTION 2 (A612)



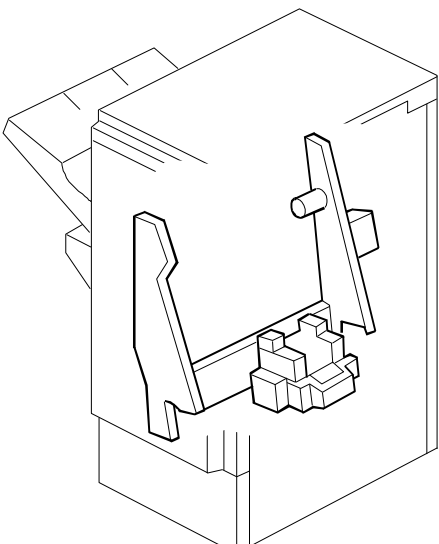
See Page 10

4. STAPLER UNIT 1 (A612)



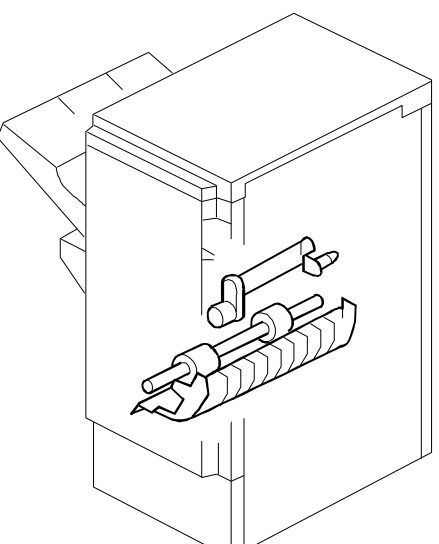
See Page 12

5. STAPLER UNIT 2 (A612)



See Page 14

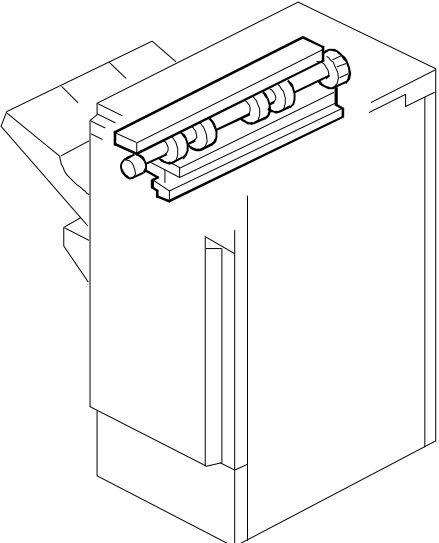
6. STAPLER UNIT 3 (A612)



See Page 16

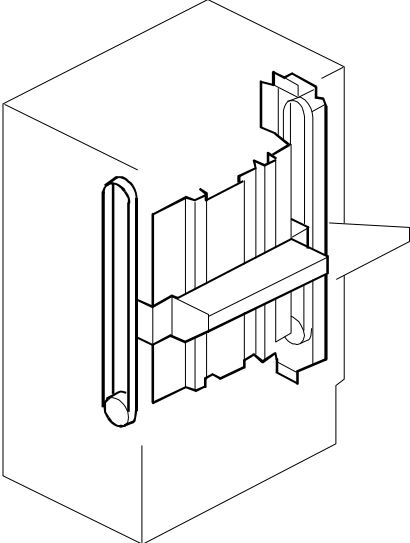
Location of Unit

7. PAPER EXIT SECTION (A612)



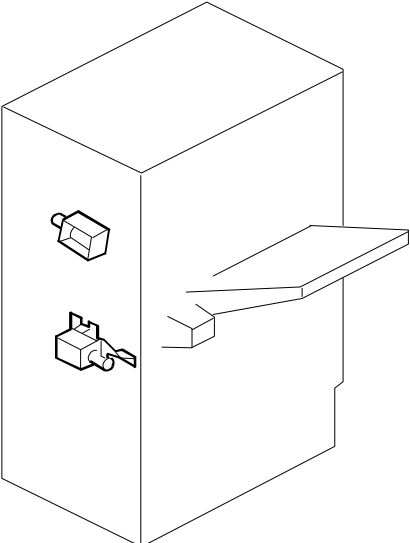
See Page 18

8. SHIFT TRAY SECTION (A612)



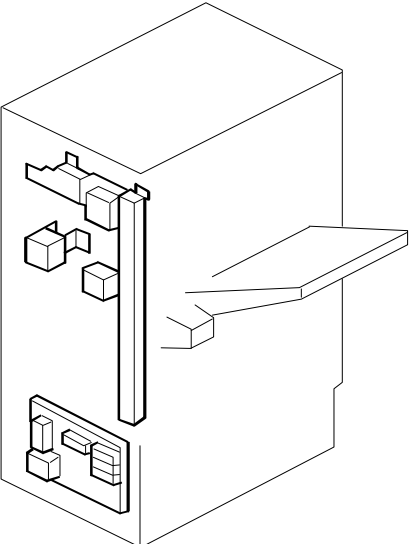
See Page 20

9. DRIVE AND ELECTRICAL SECTION 1 (A612)



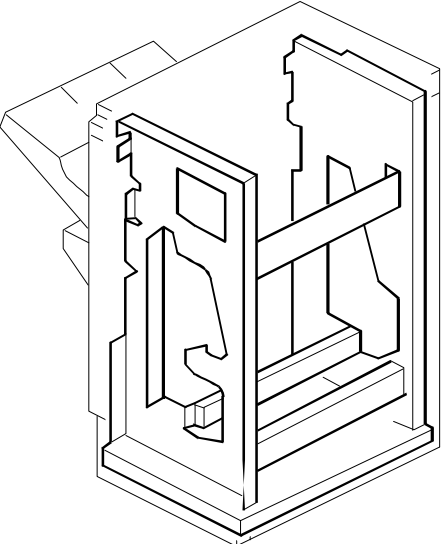
See Page 22

10. DRIVE AND ELECTRICAL SECTION 2 (A612)



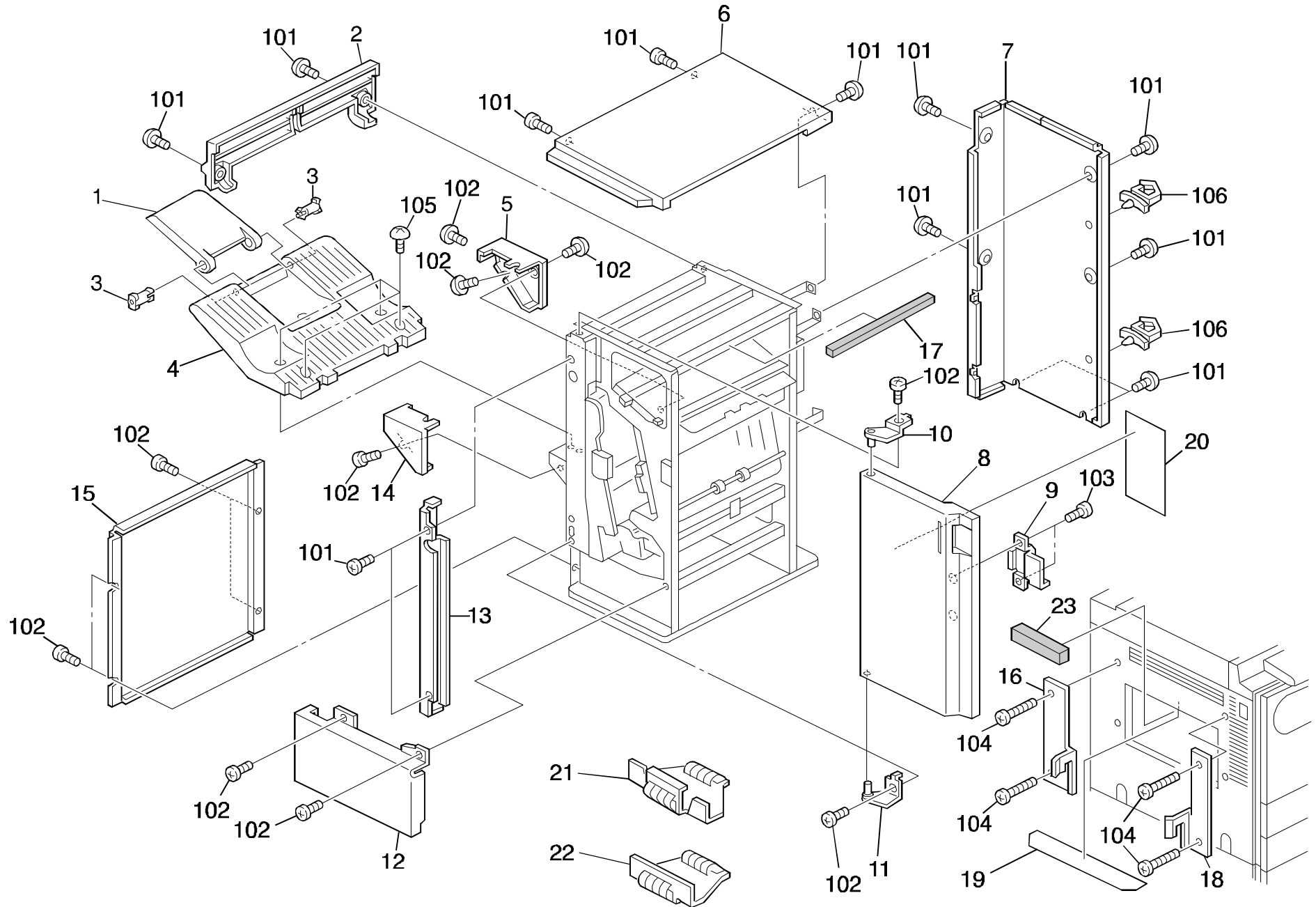
See Page 24

11. FRAME SECTION



See Page 26

1. EXTERIOR (A612)

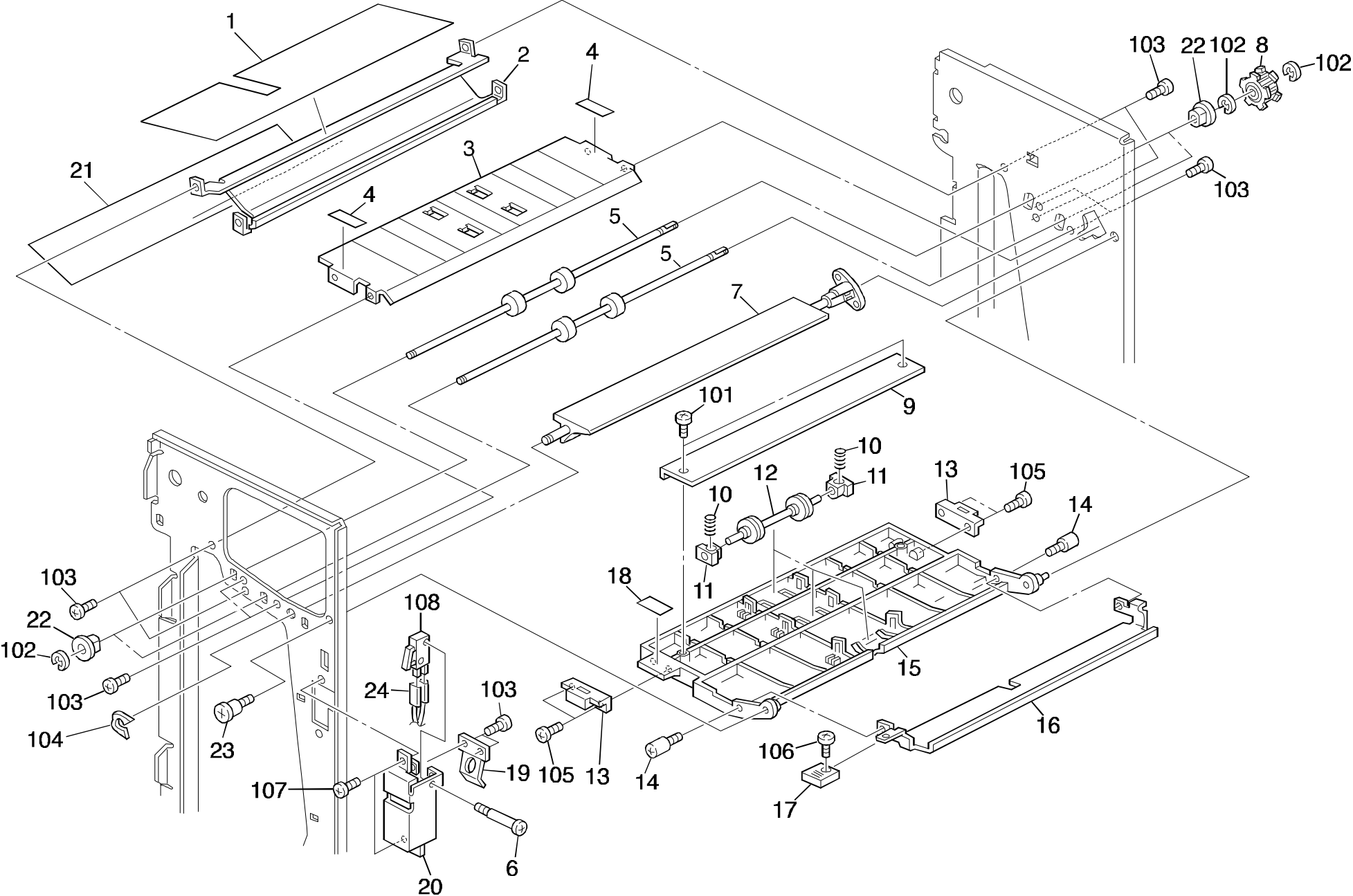


1. EXTERIOR (A612)

Index No.	Part No.	Description	Q'ty Per Assembly
1	A612 3459	Small Shift Tray	1
2	A612 6259	Cover - Left Upper	1
3	A379 3491	Shift Tray Shaft	2
4	A612 3419	Large Shift Tray	1
5	A612 3559	Rear Tray Cover	1
6	A612 6219	Upper Cover	1
7	A612 6319	Rear Cover	1
8	A612 6119	Front Door	1
9	A353 4311	Safety Switch Actuator	1
10	A379 6121	Upper Hinge	1
11	A379 6131	Lower Hinge	1
12	A612 4140	Lower Cover	1
13	A612 6159	Upper Inner Cover	1
14	A612 3519	Front Tray Cover	1
15	A612 6419	Lower Left Cover	1
16	A612 1352	Rear Joint Bracket	1
17	5316 3062	Cushion - Cutter	1
18	A612 1351	Front Joint Bracket	1
19	A379 2322	Entrance Guide	1
20	A379 4711	Decal Misfed Removal	1
21	A612 5951	Grounding Plate - Copier	1
22	A612 5955	Grounding Plate - Bank	1
23	A548 6131	Cushion - 20x190x30	1

Index No.	Part No.	Description	Q'ty Per Assembly
101	0344 0060F	Philips Truss Head Screw - M4x6	
102	0314 0060B	Philips Pan Head Screw - M4x6	
103	0414 0082B	Binding Self Tapping Screw - M4x8	
104	0314 0120B	Philips Pan Head Screw - M4x12	
105	0344 0080F	Philips Truss Head Screw - M4x8	
106	1105 0310	Wire Clamp	

2. TRANSPORT SECTION 1 (A612)

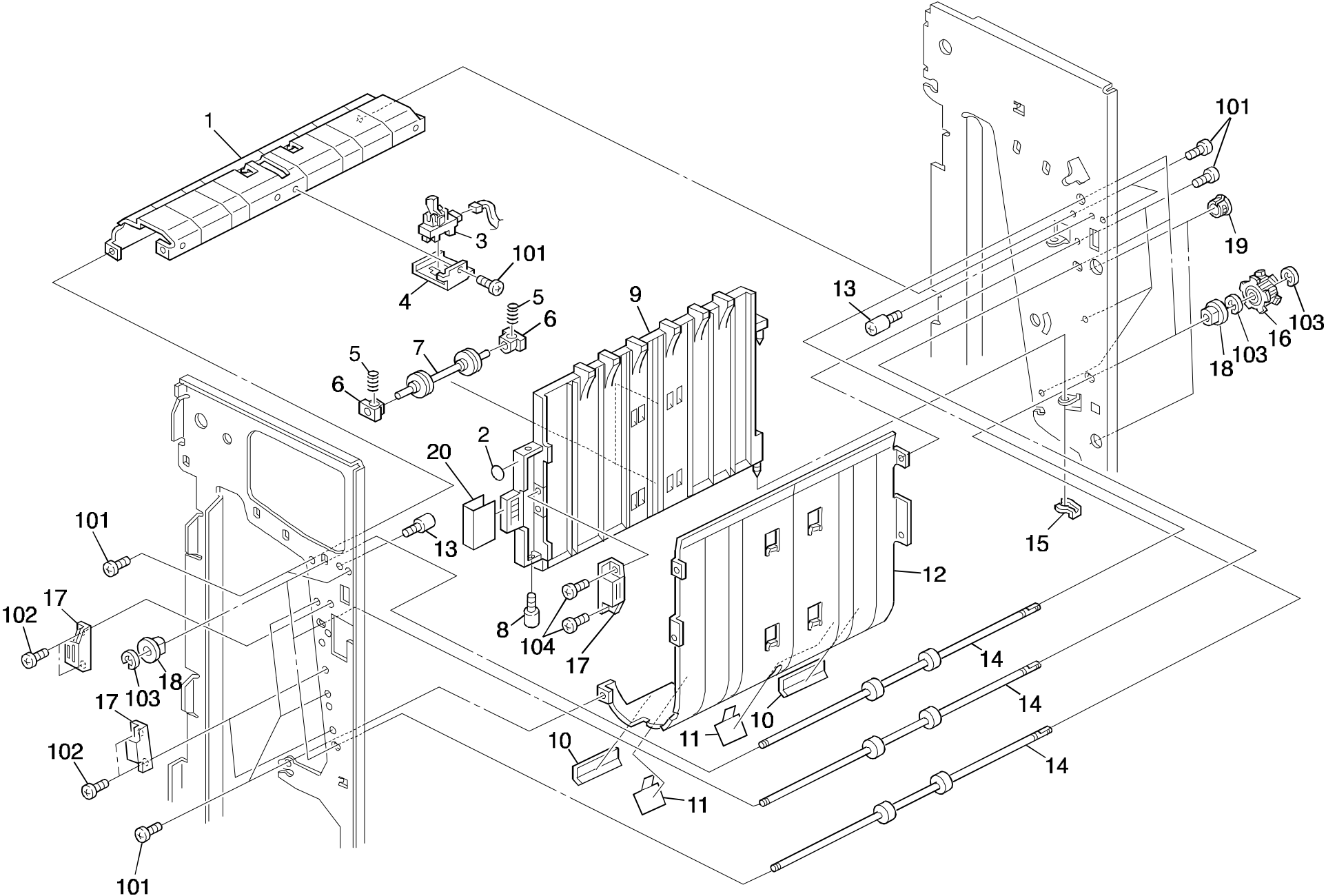


2. TRANSPORT SECTION 1 (A612)

Index No.	Part No.	Description	Q'ty Per Assembly
1	A379 2523	Exit Guide Mylar	1
2	A379 2521	Exit Guide Plate	1
3	A379 2311	Upper Guide Plate	1
4	A379 2318	Upper Magnet Sheet	2
5	AF02 0305	Transport Roller	2
6	A300 3155	Stepped Screw - M25x32	1
7	A379 2711	Junction Gate	1
8	AB03 0374	Timing Pulley - 20Z	2
9	A379 2323	Upper Support Plate	1
10	5920 2144	Spring - Lock	6
11	AA08 0034	Bushing - 4x5x7	6
12	AF02 2075	Driven Roller	3
13	AG07 0004	Magnetic Catch	2
14	5409 1855	Mounting Pin	2
15	A379 2322	Entrance Guide	1
16	A379 2326	Supporting Entrance Guide	1
17	A353 2243	Lever Knob	1
18	A353 2265	Decal - R1	1
19	A379 5915	Spring Plate	1
20	A300 3153	Safety Switch Bracket	1
21	A379 2525	Exit Guide Mylar - 2	1
22	5053 0447	Bushing - 6mm	4
23	AA14 3215	Screw - M5X6	1
24	A612 5703	Safety Switch Harness	1

Index No.	Part No.	Description	Q'ty Per Assembly
101	0414 0082B	Binding Self Tapping Screw - M4x8	
102	0720 0040B	Retaining Ring - M4	
103	0314 0060B	Philips Pan Head Screw - M4x6	
104	0805 0088	Retaining Ring - M6	
105	0802 5210	Tapping Screw - M3x8	
106	0353 0060F	Philips Truss Head Screw - M3x6	
107	0353 0060B	Philips Pan Head Screw - M3x6	
108	1204 2188	Interlock Switch	

3. TRANSPORT SECTION 2 (A612)



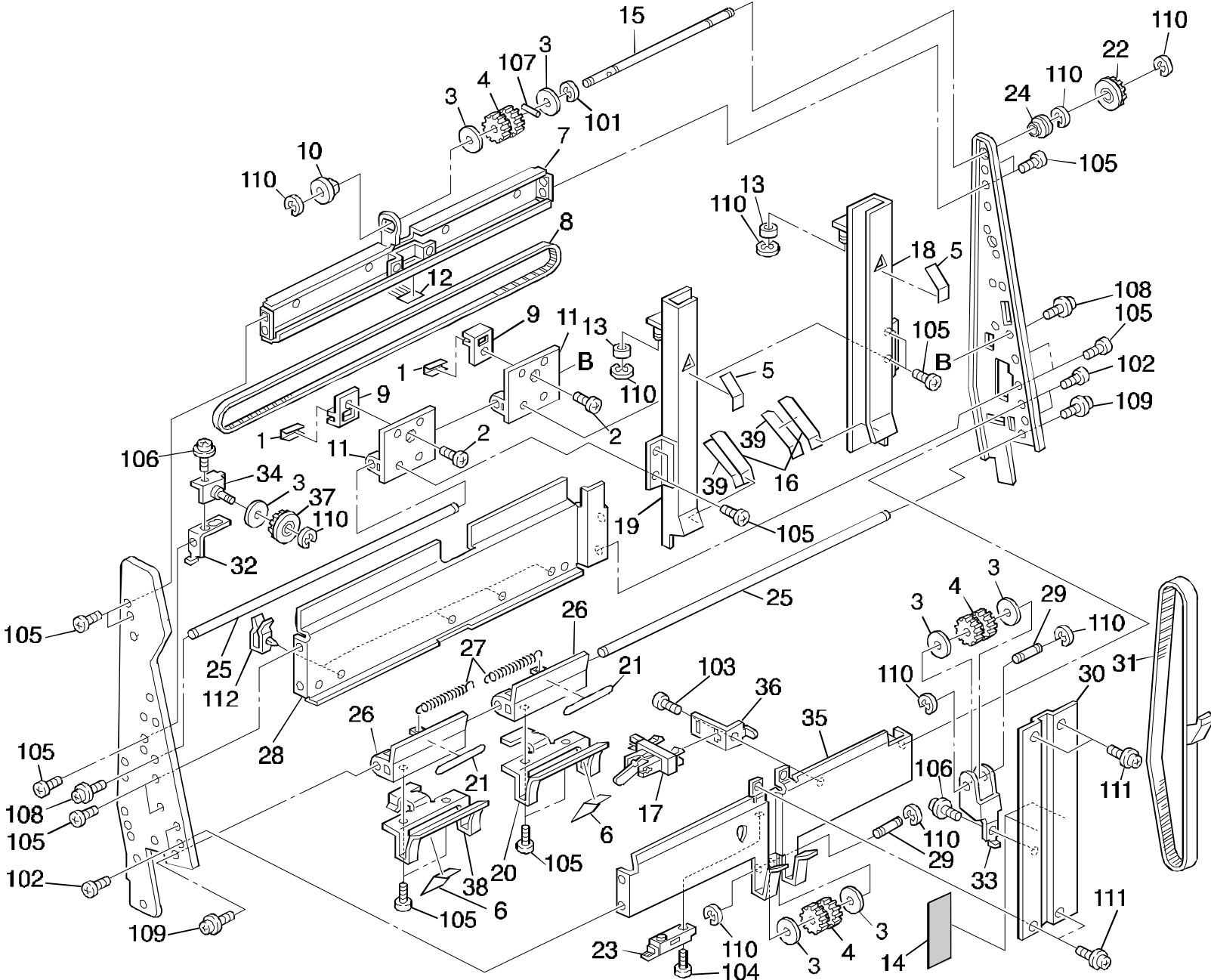
3. TRANSPORT SECTION 2 (A612)



Index No.	Part No.	Description	Q'ty Per Assembly
1	A379 2411	Lower Entrance Guide	1
2	A379 4752	Decal - R2	1
3	AW02 0049	Photointerruptor - OS - 580213-703	1
4	A379 2416	Entrance Sensor Bracket	1
5	5920 2144	Spring - Lock	4
6	AA08 0034	Bushing - 4x5x7	4
7	AF02 2075	Driven Roller	2
8	5409 1855	Mounting Pin	1
9	A612 2431	Transport Guide	1
10	A612 2425	Exit Lower Guide	2
11	A379 2426	2nd Exit Lower Guide	2
12	A379 2421	Vertical Transport Guide	1
13	AA14 3059	Pin - 6x16	2
14	AF02 0305	Transport Roller	3
15	5447 2681	Snap Ring	1
16	AB03 0374	Timing Pulley - 20Z	3
17	AG07 0004	Magnetic Catch	2
18	5053 0447	Bushing - 6mm	6
19	A353 1191	Bushing - 12x200	1
20	A612 4762	Decal - 30x48	1

Index No.	Part No.	Description	Q'ty Per Assembly
101	0314 0060B	Philips Pan Head Screw - M4x6	
102	0353 0060B	Philips Pan Head Screw - M3x6	
103	0720 0040B	Retaining Ring - M4	
104	0452 3008W	Binding Self Tapping Screw - M3x8	

4. STAPLER UNIT 1 (A612)

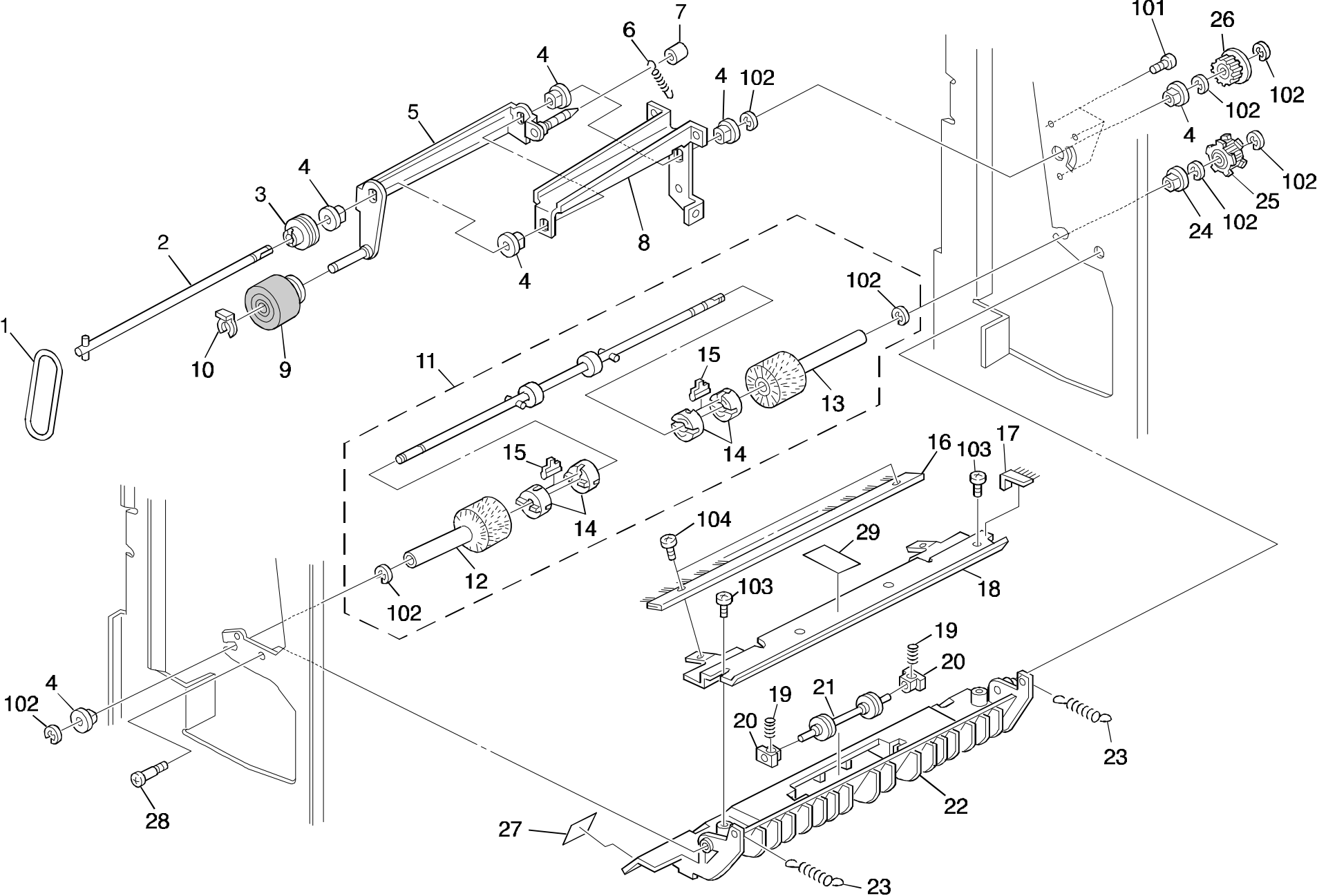


5. STAPLER UNIT 2 (A612)

Index No.	Part No.	Description	Q'ty Per Assembly
1	A300 3733	Stapler Guide Rod	1
2	A300 3812	Spacer - 6x22x1.5	2
3	A300 3717	Slide Belt Holder - Stapler	1
4	A608 4311	Stapler Slide Holder	1
5	AB03 0227	Pulley - 32Z	1
6	A300 3736	Lift Up Spring	1
7	A300 3537	Slide Rail - Center	1
8	A300 2132	Guide Roller	1
9	A300 3731	Slide Supporter	4
10	AA04 3100	Timing Belt - 900 P2M4	2
11	A608 4326	Guard - Slider	1
12	A608 4321	Stapler Holder	1
13	AJ01 1010	Stapler - EH-560	1
14	A608 4221	Stapler Stand	1
15	A608 5714	Stapler Harness - 2	1
16	A593 2916	Stapler Cover	1
17	5409 1855	Mounting Pin	7
18	AB01 0055	Gear - 46Z/13Z	1
19	A300 3822	Spacer - 11x15x1	1
20	AA04 3104	Timing Belt - 219 P3M4	1
21	A300 3539	Mounting Shaft	1
22	AX05 0095	Stepping Motor - DC 4.5W	2
23	AB03 0382	Timing Pulley - 24Z	1
24	A379 4155	Jogger Motor Bracket	1
25	A607 5510	Stapler Harnss - 1	1
26	A612 1121	Front Frame	1
27	AB03 3028	Pulley - 32Z/31Z	1
28	AB01 1085	Gear -14Z/31Z	1
29	A379 4271	Slide Motor Bracket	1
30	AB01 1141	Gear - 14Z	1
31	A300 3551	Grip Stapler Unit	1
32	A300 3646	Jogger Idler Bracket	2
33	A300 3732	Stapler Guide Rail	1
34	AW02 0006	Photointerruptor - EE-SX460-P2	2
35	A300 3841	Position Sensor Bracket	1

Index No.	Part No.	Description	Q'ty Per Assembly
37	A608 4131	Lower Left Plate	1
101	0313 0060W	Philips Pan Head Screw - M3x6	
102	0313 0080W	Philips Pan Head Screw - M3x8	
103	0314 0060B	Philips Pan Head Screw - M4x6	
104	0574 0040E	Hexagon Headless Set Screw - M4x4	
105	0313 0100B	Philips Pan Head Screw - M3x10	
106	0720 0040B	Retaining Ring - M4	
107	0720 0060B	Retaining Ring - M6	
108	0740 3008	Ball Bearing - 8x22x7	
109	0951 4006W	Philips Screw With Flat Washer-M4x6	
110	0951 4008W	Philips Screw With Flat Washer-M4x8	
111	1105 0283	Clamp	
112	1105 0005	Nylon Clamp - 3n	
113	0803 0017	Knob Screw - M4x6.5	
114	1105 0234	Clamp	
115	1105 0200	Clamp	
116	0951 3008W	Philips Screw With Flat Washer-M3x8	
117	0344 0060F	Philips Truss Head Screw - M4x6	
118	1105 0016	Nylon Clamp - 4n	

6. STAPLER UNIT 3 (A612)



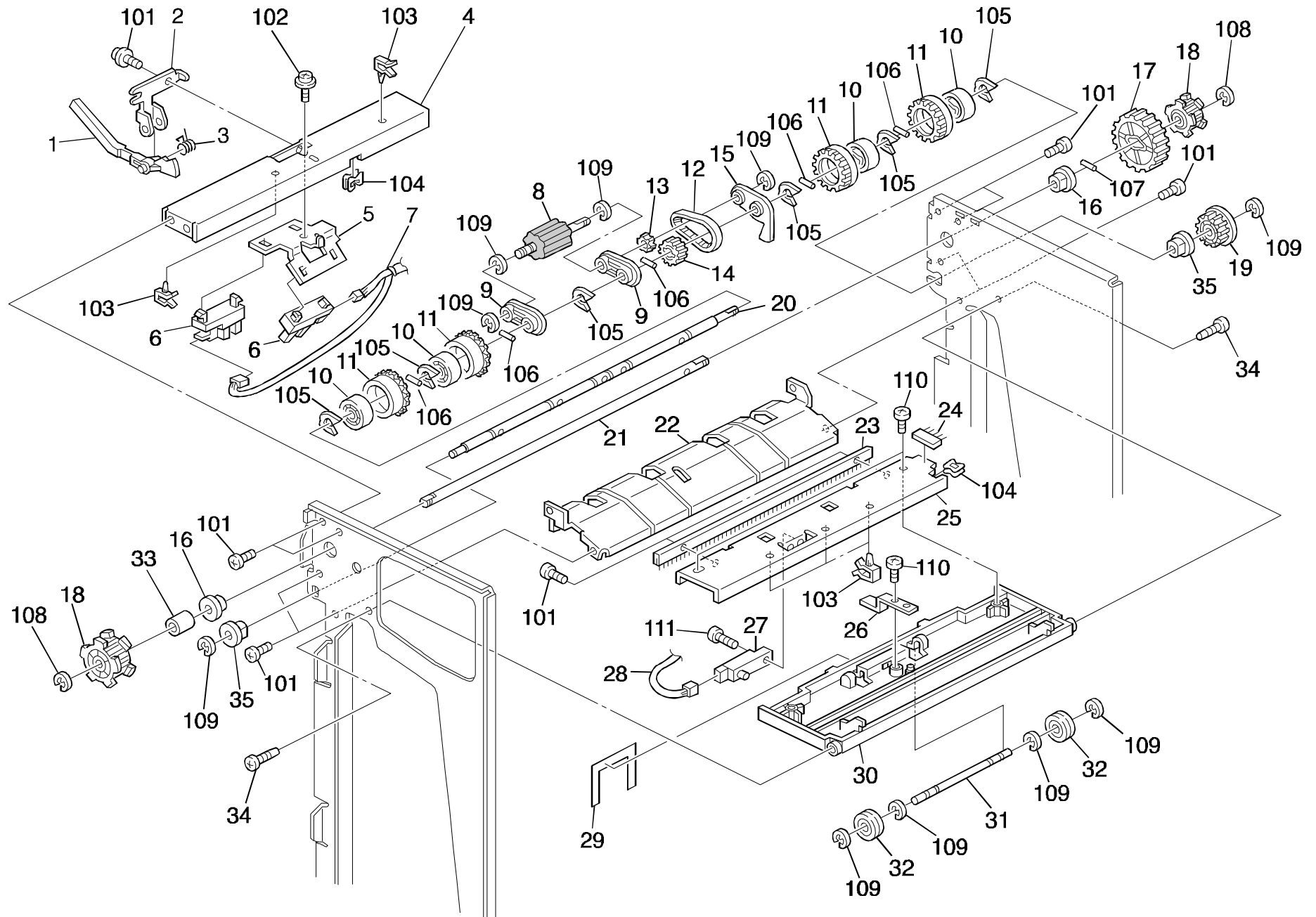
6. STAPLER UNIT 3 (A612)



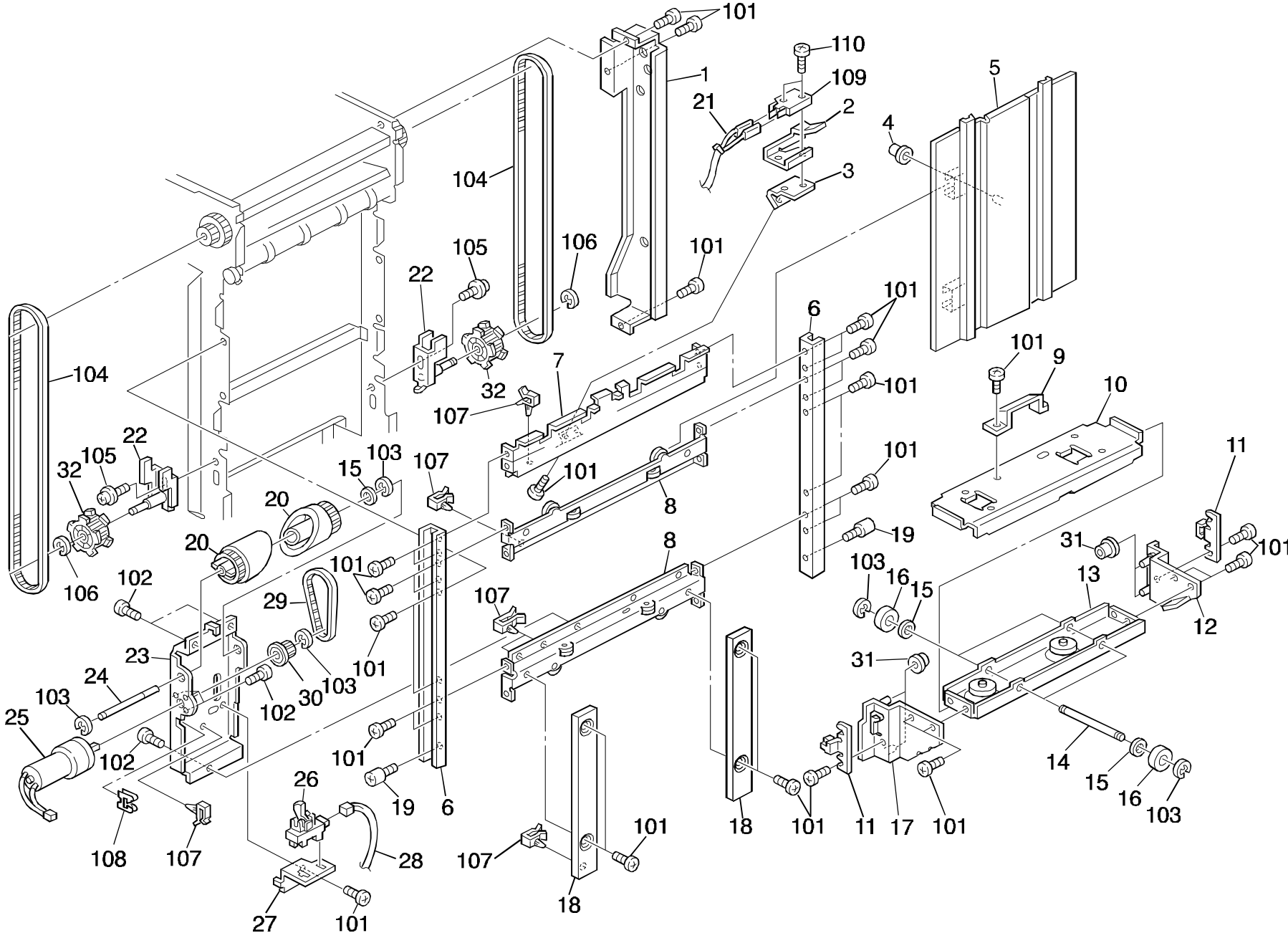
Index No.	Part No.	Description	Q'ty Per Assembly
1	5919 2132	Positioning Roller Belt	1
2	A300 3856	Positioning Roller Shaft	1
3	5919 2127	Positioning Roller Pulley	1
4	5053 0447	Bushing - 6mm	6
5	A379 2811	Positioning Roller Arm	1
6	AA06 0557	Positioning Roller Spring	1
7	AA16 1099	Lever Cushion	1
8	A300 3851	Positioning Roller Bracket	1
9	5206 2671	Positioning Roller	1
10	5447 2681	Snap Ring	1
11	A379 2631	Exit Transport Roller	1
12	A379 2635	Front Positioning Roller	1
13	A379 2636	Rear Positioning Roller	1
14	A353 2116	Paddle	2
15	A379 2617	Paddle Roller	4
16	AA12 0027	Antistatic Brush	1
17	A028 7535	Antistatic Brush	1
18	A379 2519	Supporting Lower Guide	1
19	AA06 3529	Pressure Spring - 14.5mm	2
20	AA08 0034	Bushing - 4x5x7	2
21	AF02 2075	Driven Roller	1
22	A379 2511	Lower Guide Plate	1
23	5920 2144	Spring - Lock	2
24	AA08 0071	Bushing -6x10x6	1
25	AB03 0374	Timing Pulley - 20Z	1
26	AB03 0340	Brush Roller Pulley	1
27	A379 4761	Decal - R2 - 19x29	1
28	AA14 3215	Screw - M5X6	1
29	A379 2515	Scraper	1

Index No.	Part No.	Description	Q'ty Per Assembly
101	0314 0060B	Philips Pan Head Screw - M4x6	
102	0720 0040B	Retaining Ring - M4	
103	0414 0082B	Binding Self Tapping Screw - M4x8	
104	0314 0050B	Philips Pan Head Screw - M4x5	

7. PAPER EXIT SECTION (A612)



8. SHIFT TRAY SECTION (A612)

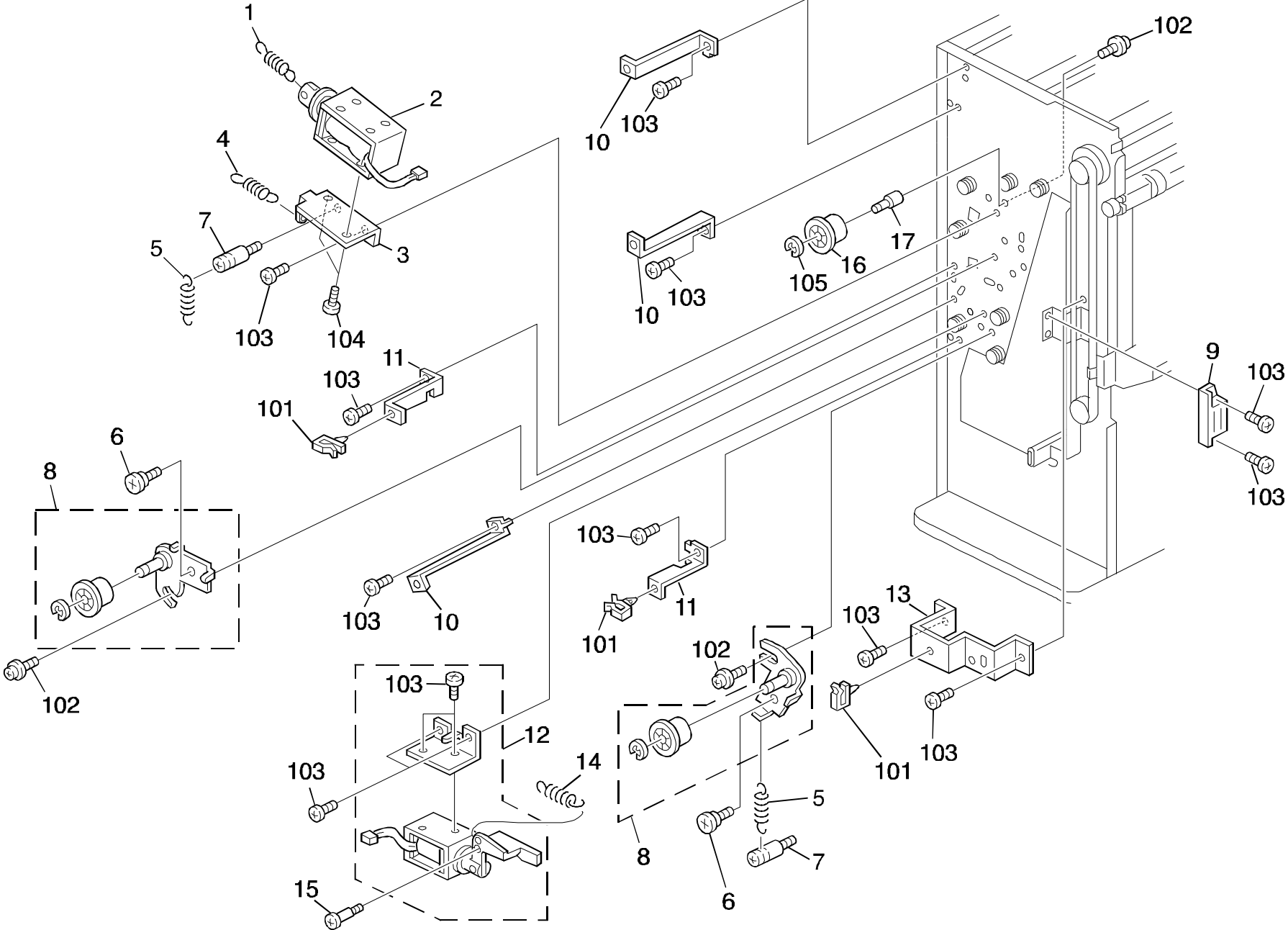


8. SHIFT TRAY SECTION (A612)

Index No.	Part No.	Description	Q'ty Per Assembly
1	A379 6161	Front Supporting Cover	1
2	A379 3133	Switch Lever	1
3	A379 3132	Switch Bracket	1
4	A353 3231	Bushing - 4x6x9mm	1
5	A379 3141	End Fence	1
6	A379 3111	Shift Tray Guide	2
7	A379 3131	Exit Roller Cover	1
8	A379 3121	Exit Stay	2
9	A379 3351	Safety Switch Bracket	1
10	A379 3341	Shift Tray Holder	1
11	A379 3711	Timing Belt Stopper	2
12	A379 3321	Rear Shift Guide	1
13	A379 3331	Shift Tray Base	1
14	A353 3271	Tray Shift Shaft	2
15	AA13 2024	Spacer - M6	5
16	A353 3272	Guide Roller	4
17	A379 3311	Front Shift Guide	1
18	A379 3191	End Fence Cover	2
19	AA14 3059	Pin - 6x16	1
20	A353 3341	Shift Drive Cam	2
21	A612 5702	Upper Limit Sensor Harness	1
22	A353 3151	Tighter Bracket	2
23	A379 3811	Shift Drive Bracket	1
24	A353 3346	Shift Drive Shaft	1
25	AX05 0055	DC Motor - DC 9W	1
26	AW02 0049	Photointerruptor - OS - 580213-703	1
27	A353 3347	Shift Sensor Bracket	1
28	A379 5717	Shift Sensor Harness	1
29	C101 1327	Timing Belt - PX146P2M	1
30	AB03 0381	Timing Pulley - 26Z	1
31	A379 3316	Shift Guide Roller	4
32	AB03 0376	Timing Pulley - 30Z	2

Index No.	Part No.	Description	Q'ty Per Assembly
101	0314 0060B	Philips Pan Head Screw - M4x6	
102	0313 0060B	Philips Pan Head Screw - M3x6	
103	0720 0040B	Retaining Ring - M4	
104	0806 5019	Timing Belt - 1005XL	
105	0951 4006B	Philips Screw With Washer - M4x6	
106	0720 0060B	Retaining Ring - M6	
107	1105 0200	Clamp	
108	1105 0283	Clamp	
109	1204 1081	Microswitch	
110	0314 0120B	Philips Pan Head Screw - M4x12	

9. DRIVE AND ELECTRICAL SECTION 1 (A612)

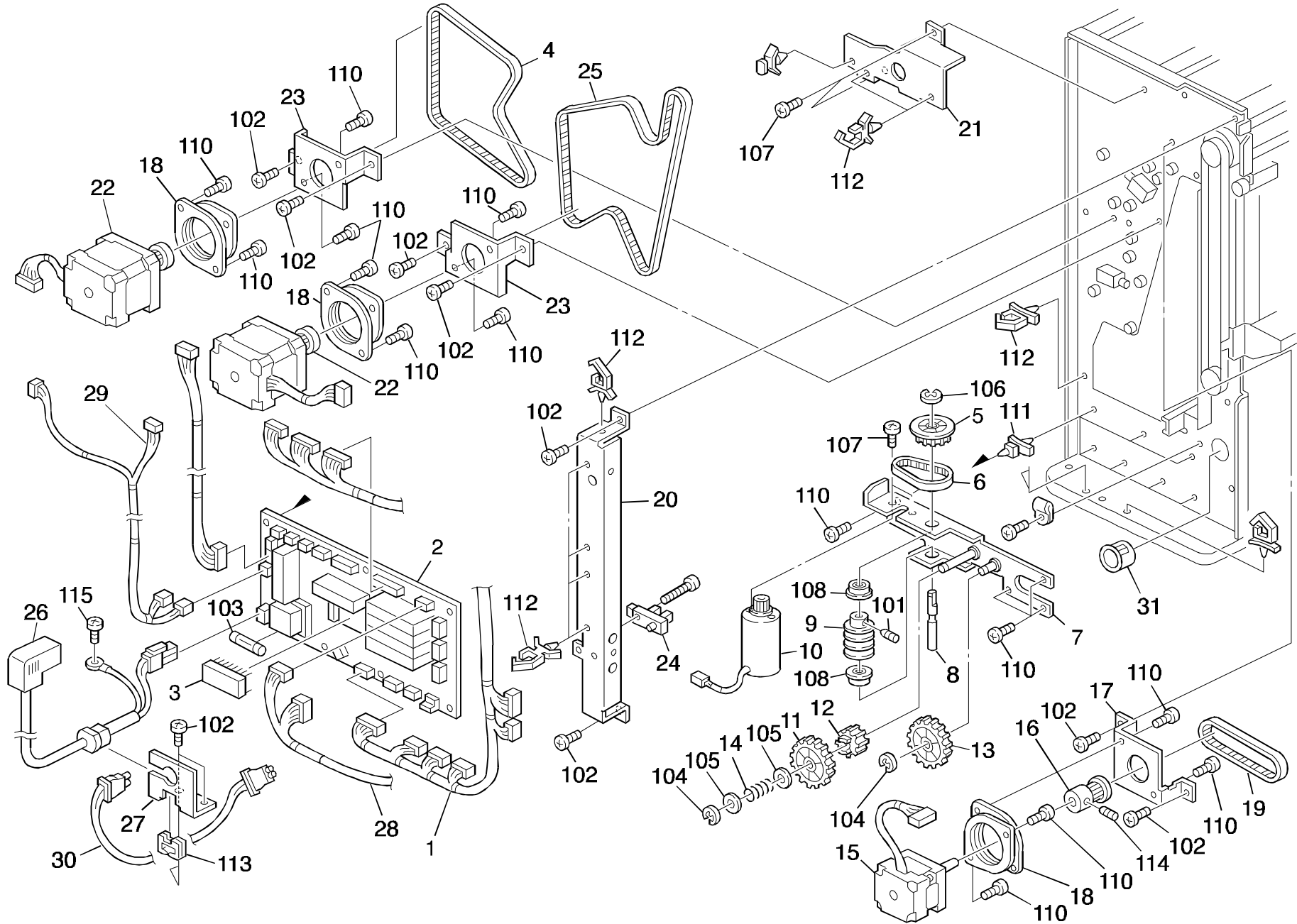


9. DRIVE AND ELECTRICAL SECTION 1 (A612)

Index No.	Part No.	Description	Q'ty Per Assembly
1	C101 2445	Pressure Spring	1
2	AX10 0021	Junction Gate Solenoid	1
3	A379 2715	Solenoid Bracket	1
4	5940 2641	Feed-in Solenoid Spring	1
5	AA06 0092	Release Spring	2
6	5413 1882	Stepped Screw	2
7	5403 2049	Spring Anchor	2
8	A566 2110	Tightener - Ass'y	2
9	AG07 0004	Magnetic Catch	1
10	A379 6225	Cover Angle	3
11	A300 3151	Support Bracket	2
12	A379 2820	Positioning Roller Solenoid	1
13	A379 1172	Upper Joint Bracket	1
14	A300 3865	Release Spring	1
15	A300 3858	Stepped Screw - M4	1
16	AB03 0425	Belt Tension Pulley	1
17	A612 1631	Idler Shaft	1

Index No.	Part No.	Description	Q'ty Per Assembly
101	1105 0200	Clamp	
102	0951 4006B	Philips Screw With Washer - M4x6	
103	0314 0060B	Philips Pan Head Screw - M4x6	
104	0313 0050B	Philips Pan Head Screw - M3x5	
105	0720 0060E	Retaining Ring - M6	

10. DRIVE AND ELECTRICAL SECTION 2 (A612)

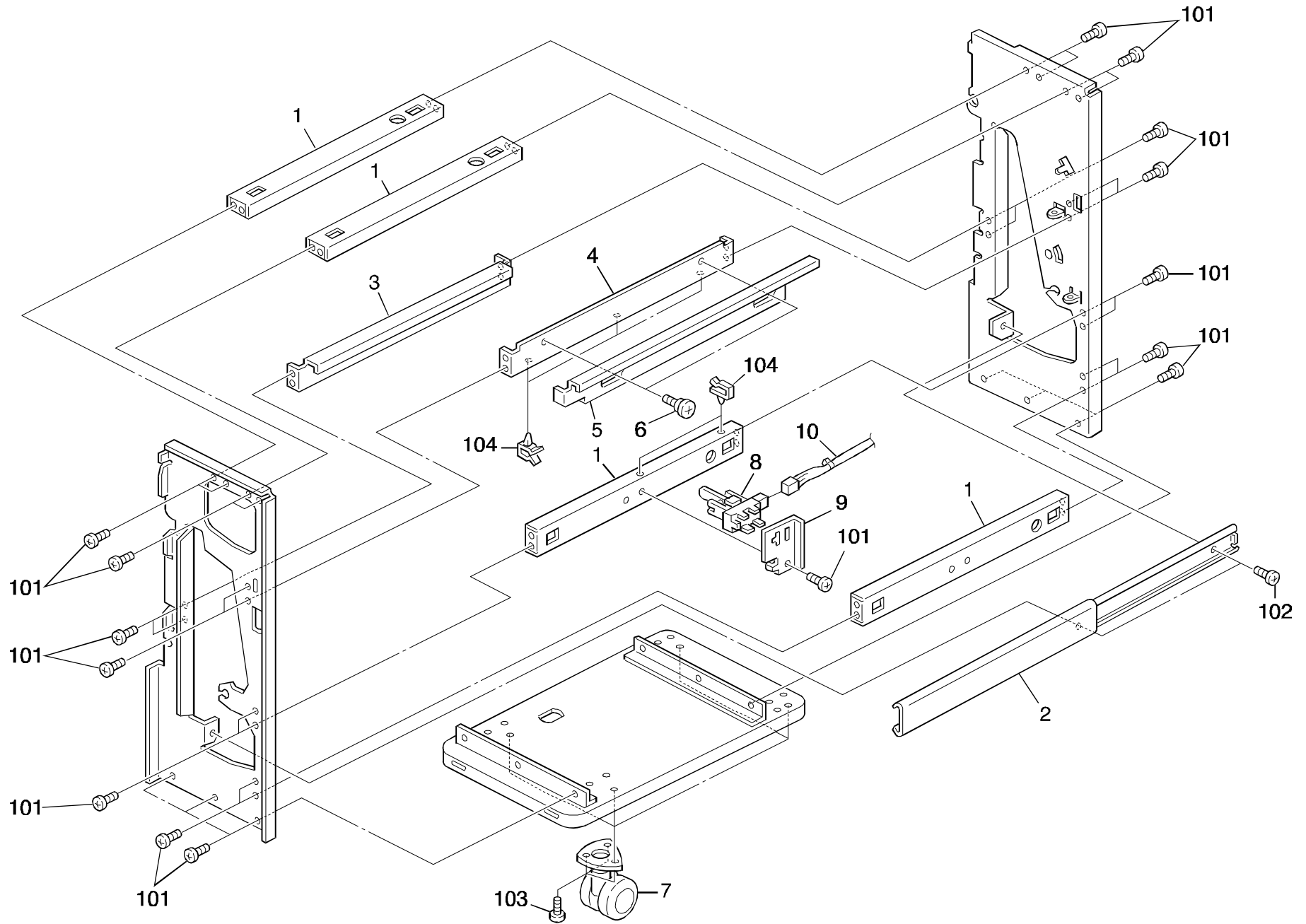


10. DRIVE AND ELECTRICAL SECTION 2 (A612)

Index No.	Part No.	Description	Q'ty Per Assembly
1	A612 5704	Main Harness	1
2	A612 5110	Main Control Board	1
3	A612 5651	IC - AM27C256 - 200DC	1
4	AA04 3462	Timing Belt - B40S3M519	1
5	AB03 0223	Pulley - 48Z	1
6	AA04 3054	Timing Belt - 142 P2M4	1
7	A379 3611	Lift Drive Bracket	1
8	A300 2726	Worm Gear Shaft	1
9	AB01 3709	Worm Gear	1
10	AX05 0055	DC Motor - DC 9W	1
11	AB01 3809	Worm Wheel - 44Z	1
12	AB01 3857	Gear - 18Z	1
13	AB01 3710	Gear - 40Z	1
14	A353 3113	Pressure Spring	1
15	AX05 0057	Stepping Motor - DC24V 3.84W	1
16	AB03 0216	Pulley - 15Z	1
17	A379 1711	Motor Bracket	1
18	A548 2113	Motor Cushion	3
19	AA04 3238	Timing Belt - B40S2M206	1
20	A379 6321	Rear Support Cover	1
21	A379 5911	Upper Harness Bracket	1
22	A566 2101	Stepping Motor - DC 6.3W	2
23	A612 1612	Bracket - Motor	2
24	AW02 0012	Photointerruptor	1
25	AA04 3103	Timing Belt - 660 P3M4	1
26	A612 5722	I/F Harness	1
27	A612 5914	Bracket - I/F Cable	1
28	A612 5713	Exit Sensor Harness	1
29	A612 5703	Safety Switch Harness	1
30	AW03 0072	Optical Fiber - 1100mm	1

Index No.	Part No.	Description	Q'ty Per Assembly
101	0574 0040E	Hexagon Headless Set Screw - M4x4	
102	0314 0060B	Philips Pan Head Screw - M4x6	
103	1107 0752	Fuse - 5A 250V	
104	0720 0060B	Retaining Ring - M6	
105	0807 5056	Washer - 8.1mm	
106	0720 0040B	Retaining Ring - M4	
107	0313 0060B	Philips Pan Head Screw - M3x6	
108	0741 3506	Ball Bearing - 6x12x4 mm	
109	0314 0080B	Philips Pan Head Screw - M4x8	
110	0313 0050B	Philips Pan Head Screw - M3x5	
111	1105 0437	Wire Saddle	
112	1105 0310	Wire Clamp	
113	1106 0289	Bushing- SR-5N-1	
114	0574 0040E	Hexagon Headless Set Screw - M4x4	
115	0950 4008B	Philips Screw With Spring Washer - M4x8	

11. FRAME SECTION



11. FRAME SECTION

Index No.	Part No.	Description	Q'ty Per Assembly
1	A379 1141	Right Stay	4
2	AA07 0024	Slide Rail	1
3	A379 1161	Left Stay	1
4	A379 1311	Joint Stay	1
5	A377 1182	Joint Lever	1
6	5413 1882	Stepped Screw	2
7	AH01 2010	Caster - 50m	4
8	AW02 0049	Photointerruptor - OS - 580213-703	1
9	A379 2441	Exit Sensor Bracket	1
10	A612 5704	Main Harness	1

Index No.	Part No.	Description	Q'ty Per Assembly
101	0314 0060B	Philips Pan Head Screw - M4x6	
102	0344 0060F	Philips Truss Head Screw - M4x6	
103	0315 0080B	Philips Pan Head Screw - M5x8	
104	1105 0200	Clamp	

12. MAIN CONTROL BOARD (A612)

CAPACITOR

SYMBOL NO.	INDEX NO.
C100	188
C101	185
C102	190
C103	189
C104	188
C105	158
C106	158
C107	188
C108	188
C109	188

SYMBOL NO.	INDEX NO.
C110	188
C111	187
C112	186
C150	155
C151	153
C152	156
C153	155
C154	155
C155	156
C156	155

SYMBOL NO.	INDEX NO.
C157	155
C158	156
C159	155
C160	155
C161	156
C162	156
C163	156
C164	156
C165	156
C166	156

SYMBOL NO.	INDEX NO.
C167	156
C168	156
C169	156
C170	156
C171	156
C172	155
C173	156
C174	155
C175	156
C176	156

SYMBOL NO.	INDEX NO.
C177	156
C178	155
C179	155
C180	156
C181	155
C182	155
C183	155
C184	155
C185	155
C186	155

SYMBOL NO.	INDEX NO.
C187	156
C188	156
C189	156
C190	152
C191	152
C192	156
C193	154
C194	155
C195	156
C196	155

SYMBOL NO.	INDEX NO.
C197	155
C198	155
C199	156
C200	155
C201	156
C202	155
C203	156
C204	155
C205	155
C206	155

CONNECTOR

SYMBOL NO.	INDEX NO.
C207	155
C208	155
C209	155
C210	155
C211	155
C212	155
C213	155
C214	155
C215	152
C216	189

SYMBOL NO.	INDEX NO.
C217	155
C218	152
C219	155
C220	157
C221	153

SYMBOL NO.	INDEX NO.
CN101	115
CN102	116
CN103	114
CN104	103
CN105	110
CN106	106
CN107	105
CN108	113
CN109	109
CN110	111

SYMBOL NO.	INDEX NO.
CN111	117
CN112	106
CN113	107
CN114	108
CN115	104
CN116	102
CN117	112

SYMBOL NO.	INDEX NO.
D100	128
D101	128
D102	130
D103	128

DPS

SYMBOL NO.	INDEX NO.
DPS100	121
DPS101	121

FB

SYMBOL NO.	INDEX NO.
FB102	159
FB103	159

FUSE

SYMBOL NO.	INDEX NO.
FU100	120

IC

SYMBOL NO.	INDEX NO.
IC100	144
IC101	143
IC102	141
IC103	134
IC104	138
IC105	146
IC106	134
IC107	119
(SOCKET)	
IC108	139

12. MAIN CONTROL BOARD (A612)

IC		OSC		Q		RESISTOR	
SYMBOL NO.	INDEX NO.	SYMBOL NO.	INDEX NO.	SYMBOL NO.	INDEX NO.	SYMBOL NO.	INDEX NO.
IC109	132	OSC100	149	Q100	126	R100	160
IC110	135	OSC101	148	Q101	125	R101	150
IC111	140			Q102	123	R102	150
IC112	137			Q150	122	R103	161
IC113	136			Q151	127	R150	173
IC114	1			Q152	127	R151	171
IC115	133			Q153	127	R152	170
IC116	147			Q154	124	R153	173
IC117	147					R154	171
IC118	147					R155	182

LED		PC	
SYMBOL NO.	INDEX NO.	SYMBOL NO.	INDEX NO.
LED100	129	PC100	131
		PC101	131

SYMBOL NO.	INDEX NO.	SYMBOL NO.	INDEX NO.	SYMBOL NO.	INDEX NO.	SYMBOL NO.	INDEX NO.	SYMBOL NO.	INDEX NO.	SYMBOL NO.	INDEX NO.
R176	164	R186	171	R196	164	R206	164	R216	163	R226	164
R177	175	R187	171	R197	164	R207	164	R217	163	R227	164
R178	177	R188	164	R198	164	R208	164	R218	163	R228	164
R179	166	R189	164	R199	164	R209	164	R219	163	R229	164
R180	173	R190	164	R200	172	R210	164	R220	163	R230	164
R181	164	R191	164	R201	164	R211	164	R221	173	R231	164
R182	171	R192	164	R202	164	R212	177	R222	170	R232	164
R183	171	R193	177	R203	164	R213	177	R223	167	R233	164
R184	164	R194	164	R204	164	R214	163	R224	177	R234	177
R185	173	R195	164	R205	164	R215	163	R225	177	R235	177
										R236	177
										R237	177
										R238	177
										R239	177
										R240	177
										R241	163
										R242	171
										R243	173
										R244	171
										R245	----

12. MAIN CONTROL BOARD (A612)

RESISTOR

SYMBOL NO.	INDEX NO.
R246	171
R247	173
R248	171
R249	173
R250	171
R251	165
R252	164
R253	164
R254	170
R255	170

SYMBOL NO.	INDEX NO.
R256	177
R257	164
R258	177
R259	177
R260	177
R261	177
R262	168
R263	177
R264	177
R265	177

SYMBOL NO.	INDEX NO.
R266	177
R267	168
R268	177
R269	177
R270	177
R271	177
R272	183
R273	177
R274	181
R275	176

SYMBOL NO.	INDEX NO.
R276	181
R277	179
R278	181
R279	179
R280	162
R281	177
R282	162
R283	173
R284	171
R285	171

SYMBOL NO.	INDEX NO.
R286	173
R287	164
R288	164
R289	171
R290	173
R291	171
R292	173
R293	171
R294	173
R295	----

SYMBOL NO.	INDEX NO.
R296	167
R297	164
R298	164
R299	164
R300	165

TP

SYMBOL NO.	INDEX NO.
TP100	101

VR

SYMBOL NO.	INDEX NO.
VR100	151

12. MAIN CONTROL BOARD (A612)

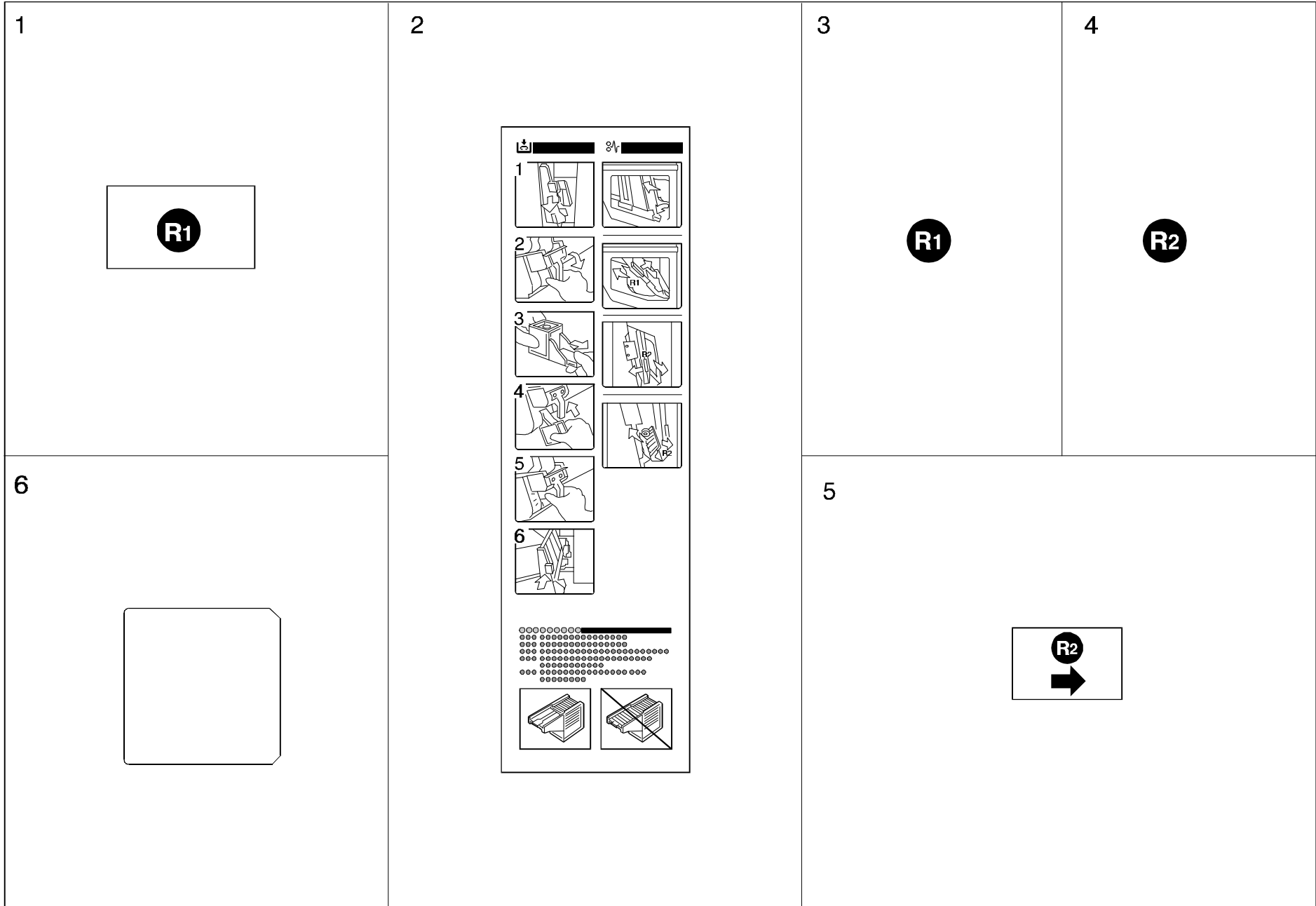
Index No.	Part No.	Description	Q'ty Per Assembly
*	A612 5110	Main Control Board	1
1	A377 5150	IC - TC11DG03AF-0071	1
2	A612 5651	IC - AM27C256 - 200DC	1

Index No.	Part No.	Description	Q'ty Per Assembly
101	1101 0328	Connector Pin Contact	
102	1102 4201	Connector - 2p	
103	1102 4202	Connector - 3p	
104	1102 4203	CT Header - 4p	
105	1102 4204	CT Header - 5p	
106	1102 4206	Connector - 7p	
107	1102 4208	Connector - 9p	
108	1102 4211	CT Header - 12p	
109	1102 4212	CT Header - 15p	
110	1102 4620	CT Header - 3p	
111	1102 4623	CT Connector - 6p	
112	1102 4624	CT Connector - 7p	
113	1102 5007	CT Header - 14p	
114	1102 5301	Connector - 2p	
115	1102 5325	Connector - 2p	
116	1102 5718	Optical Fiber Connector	
117	1103 1770	Connector - 4p	
118	1104 0333	Fuse Holder	
119	1104 0413	Connetctor - 28p	
120	1107 0752	Fuse - 5A 250V	
121	1204 1422	Dip Switch - 5HD0401	
122	1400 0423	Transistor - 2SA1121C	
123	1400 0486	Transistor - 2SA1020	
124	1400 0678	Transistor - FC112	
125	1401 0200	Transistor - 2SD633	
126	1401 0282	Transistor - 2SB1020	
127	1401 0298	Transistor - 2SC2712Y	
128	1402 0780	Diode - 200V - 1A - 11ES2	
129	1402 0783	Red LED - G13PR8	
130	1402 0874	Diode - RL2Z	
131	1403 0519	Photocoupler - TLP621	
132	1407 1882	TTLIC - SN74LS373NS	
133	1407 2054	IC - TD62308F	
134	1407 2218	TTLIC - SN74LS06NS	
135	1407 2404	CMOS - LSI - M5M81C55FP-2	

Index No.	Part No.	Description	Q'ty Per Assembly
136	1407 3286	IC - TC74HC04AF	
137	1407 3321	IC - MC74HC00AF	
138	1407 3492	CPU -78C10AGF	
139	1407 3756	TIMER - TMP82C54M-2	
140	1407 4137	IC - MM1035XF	
141	1408 0397	Comparator - NJM2901M	
142	1408 0398	IC - NJ2903M	
143	1408 0538	IC - SI8301L	
144	1408 0599	IC - M51971EP	
145	1408 0827	IC - TA8429H	
146	1408 1200	IC - STK681-050	
147	1408 1201	IC - STK6711BMK4	
148	1503 0512	Oscillator - 3MHz	
149	1503 0570	Oscillator - 15MHz	
150	1600 1354	Resistor Array - 1k Ω 1W	
151	1601 8148	Variable Resistor - 20k Ω 0.5W	
152	1605 0226	Capacitor - 1000 pF 50V	
153	1605 0288	Capacitor - 4700pF \pm 5%	
154	1605 0339	Capacitor - 0.33 μ F - +80-20%	
155	1605 0636	Capacitor - 0.1 μ F	
156	1606 1139	Capacitor - 0.01 μ F \pm 20%	
157	1606 1208	Capacitor - 100PF \pm 5% 50V	
158	1606 1348	Capacitor - 0.022 μ F 50V	
159	1607 0069	Fuse - BLO2RN2-R62-PB	
160	1611 4101	Resistor - 100 Ω 1/4T \pm 5%	
161	1611 4330	Resistor - 330 Ω 1/4T \pm 5%	
162	1630 3101	Resistor - 100 Ω - 1/10W	
163	1630 3102	Resistor - 1k Ω 1/10W \pm 5%	
164	1630 3103	Resistor - 10k Ω 1/10W \pm 5%	
165	1630 3104	Resistor - 100k Ω 1/10W \pm 5%	
166	1630 3151	Resistor - 150k Ω \pm 5% 1/10W	
167	1630 3152	Resistor - 1.5k Ω - 1/10W	
168	1630 3201	Resistor - 200 Ω 1/10W \pm 5%	
169	1630 3202	Resistor - 2K Ω -1/10W	

Index No.	Part No.	Description	Q'ty Per Assembly
170	1630 3222	Resistor - 2.2k Ω 1/10W \pm 5%	
171	1630 3223	Resistor - 22k Ω - 1/10W	
172	1630 3241	Resistor - 240 Ω 1/10W \pm 5%	
173	1630 3302	Resistor - 3k Ω - 1/10W	
174	1630 3333	Resistor - 33k Ω \pm 5% 1/10W	
175	1630 3362	Resistor - 3.6k Ω \pm 5% 1/10W	
176	1630 3431	Resistor - 430 Ω - \pm 5% - 1/10	
177	1630 3472	Resistor - 4.7k Ω 1/10W \pm 5%	
178	1630 3473	Resistor - 47k Ω 1/10W \pm 5%	
179	1630 3511	Resistor - 510 Ω 1/10W \pm 5%	
180	1630 3562	Resistor - 5.6k Ω \pm 5% 1/10W	
181	1630 3682	Resistor - 6.8k Ω - 1/10W	
182	1630 3753	Resistor - 75k Ω - 1/10W	
183	1630 3821	Resistor - 820 Ω \pm 5% 1/10W	
184	1630 3822	Resistor - 8.2k Ω 1/10W \pm 5%	
185	1640 0102	Capacitor - 1000 μ F - \pm 20% - 10V	
186	1640 2221	Capacitor - 220 μ F - \pm 20% 25V	
187	1640 5100	Capacitor - 10 μ F \pm 20% 50V	
188	1640 5101	Capacitor - 100 μ F \pm 20% 50V	
189	1640 5109	Capacitor - 1 μ F - \pm 20% - 50V	
190	1640 5339	Capacitor - 3.3 μ F - \pm 20% - 50V	

13. DECAL AND DOCUMENT (A612)



13. DECAL AND DOCUMENT (A612)

Index No.	Part No.	Description	Q'ty Per Assembly
1	A353 2265	Decal - R1	1
2	A379 4711	Decal Misfed Removal	1
3	A379 4751	Decal - R1	1
4	A379 4752	Decal - R2	1
5	A379 4761	Decal - R2 - 19x29	1
6	A612 4763	Decal - 30x48	1

Index No.	Part No.	Description	Q'ty Per Assembly

PARTS INDEX

Part No.	Description	Page and Index No.
A612 1121	Front Frame	13- 26
A612 1351	Front Joint Bracket	5- 18
A612 1352	Rear Joint Bracket	5- 16
A612 1612	Bracket - Motor	23- 23
A612 1631	Idler Shaft	21- 17
A612 2425	Exit Lower Guide	9- 10
A612 2431	Transport Guide	9- 9
A612 3419	Large Shift Tray	5- 4
A612 3459	Small Shift Tray	5- 1
A612 3519	Front Tray Cover	5- 14
A612 3559	Rear Tray Cover	5- 5
A612 4140	Lower Cover	5- 12
A612 4146	Lower Cover	11- 28
A612 4762	Decal - 30x48	9- 20
A612 4763	Decal - 30x48	31- 6
A612 5110	Main Control Board	23- 2
A612 5110	Main Control Board	27- *
A612 5651	IC - AM27C256 - 200DC	23- 3
A612 5651	IC - AM27C256 - 200DC	27- 2
A612 5702	Upper Limit Sensor Harness	19- 21
A612 5703	Safety Switch Harness	7- 24
A612 5703	Safety Switch Harness	23- 29
A612 5704	Main Harness	23- 1
A612 5704	Main Harness	25- 10
A612 5713	Exit Sensor Harness	23- 28
A612 5722	I/F Harness	23- 26
A612 5914	Bracket - I/F Cable	23- 27
A612 5951	Grounding Plate - Copier	5- 21
A612 5955	Grounding Plate - Bank	5- 22
A612 6119	Front Door	5- 8
A612 6159	Upper Inner Cover	5- 13
A612 6219	Upper Cover	5- 6
A612 6259	Cover - Left Upper	5- 2
A612 6319	Rear Cover	5- 7
A612 6419	Lower Left Cover	5- 15

Part No.	Description	Page and Index No.
AA04 3054	Timing Belt - 142 P2M4	23- 6
AA04 3100	Timing Belt - 900 P2M4	11- 8
AA04 3100	Timing Belt - 900 P2M4	13- 10
AA04 3103	Timing Belt - 660 P3M4	23- 25
AA04 3104	Timing Belt - 219 P3M4	13- 20
AA04 3181	Timing Belt - B40S2M80	17- 12
AA04 3238	Timing Belt - B40S2M206	23- 19
AA04 3462	Timing Belt - B40S3M519	23- 4
AA06 0092	Release Spring	21- 5
AA06 0557	Positioning Roller Spring	15- 6
AA06 3529	Pressure Spring - 14.5mm	15- 19
AA07 0024	Slide Rail	25- 2
AA08 0034	Bushing - 4x5x7	7- 11
AA08 0034	Bushing - 4x5x7	9- 6
AA08 0034	Bushing - 4x5x7	15- 20
AA08 0071	Bushing -6x10x6	15- 24
AA12 0027	Antistatic Brush	15- 16
AA12 0027	Antistatic Brush	17- 23
AA13 2024	Spacer - M6	19- 15
AA14 3059	Pin - 6x16	9- 13
AA14 3059	Pin - 6x16	19- 19
AA14 3215	Screw - M5X6	7- 23
AA14 3215	Screw - M5X6	15- 28
AA14 3215	Screw - M5X6	17- 34
AA16 1099	Lever Cushion	15- 7
AB01 0055	Gear - 46Z/13Z	13- 18
AB01 1085	Gear -14Z/31Z	13- 28
AB01 1141	Gear - 14Z	13- 30
AB01 3709	Worm Gear	23- 9
AB01 3710	Gear - 40Z	23- 13
AB01 3712	Gear - 52Z	17- 17
AB01 3809	Worm Wheel - 44Z	23- 11
AB01 3857	Gear - 18Z	23- 12
AB03 0030	Pulley - 17Z	11- 22
AB03 0216	Pulley - 15Z	23- 16

Part No.	Description	Page and Index No.
AB03 0223	Pulley - 48Z	23- 5
AB03 0227	Pulley - 32Z	11- 37
AB03 0227	Pulley - 32Z	13- 5
AB03 0229	Timing Pulley - 20Z	11- 4
AB03 0340	Brush Roller Pulley	15- 26
AB03 0340	Brush Roller Pulley	17- 19
AB03 0374	Timing Pulley - 20Z	7- 8
AB03 0374	Timing Pulley - 20Z	9- 16
AB03 0374	Timing Pulley - 20Z	15- 25
AB03 0375	Timing Pulley - 30Z	17- 18
AB03 0376	Timing Pulley - 30Z	19- 32
AB03 0377	Timing Pulley - 28Z	17- 14
AB03 0378	Timing Pulley - 20Z	17- 13
AB03 0381	Timing Pulley - 26Z	19- 30
AB03 0382	Timing Pulley - 24Z	13- 23
AB03 0425	Belt Tension Pulley	21- 16
AB03 3028	Pulley - 32Z/31Z	13- 27
AF02 0305	Transport Roller	7- 5
AF02 0305	Transport Roller	9- 14
AF02 2075	Driven Roller	7- 12
AF02 2075	Driven Roller	9- 7
AF02 2075	Driven Roller	15- 21
AG07 0004	Magnetic Catch	7- 13
AG07 0004	Magnetic Catch	9- 17
AG07 0004	Magnetic Catch	21- 9
AH01 2010	Caster - 50m	25- 7
AJ01 1010	Stapler - EH-560	13- 13
AW01 0027	Photosensor - ON2530 CT	11- 23
AW02 0006	Photointerruptor - EE-SX460-P2	13- 34
AW02 0006	Photointerruptor - EE-SX460-P2	17- 6
AW02 0012	Photointerruptor	11- 17
AW02 0012	Photointerruptor	23- 24
AW02 0049	Photointerruptor - OS - 580213-703	9- 3
AW02 0049	Photointerruptor - OS - 580213-703	19- 26
AW02 0049	Photointerruptor - OS - 580213-703	25- 8

Part No.	Description	Page and Index No
AW03 0072	Optical Fiber - 1100mm	23- 30
AX05 0055	DC Motor - DC 9W	19- 25
AX05 0055	DC Motor - DC 9W	23- 10
AX05 0057	Stepping Motor - DC24V 3.84W	23- 15
AX05 0095	Stepping Motor - DC 4.5W	13- 22
AX10 0021	Junction Gate Solenoid	21- 2
C101 1327	Timing Belt - PX146P2M	19- 29
C101 2445	Pressure Spring	21- 1

Part No.	Description	Page and Index No.
A010 5700	Sensor	17- 27
A028 7535	Antistatic Brush	11- 12
A028 7535	Antistatic Brush	15- 17
A028 7535	Antistatic Brush	17- 24
A300 2132	Guide Roller	13- 8
A300 2726	Worm Gear Shaft	23- 8
A300 2752	Spacer 8x12x12	17- 33
A300 3151	Support Bracket	21- 11
A300 3153	Safety Switch Bracket	7- 20
A300 3155	Stepped Screw - M25x32	7- 6
A300 3533	Upper Stay	11- 7
A300 3537	Slide Rail - Center	13- 7
A300 3539	Mounting Shaft	13- 21
A300 3551	Grip Stapler Unit	13- 31
A300 3611	Front Jogger Fence	11- 19
A300 3618	Antistatic Guide Seal	11- 39
A300 3621	Rear Jogger Fence	11- 18
A300 3626	Lower Guide Seal	11- 16
A300 3634	Spring Plate - Timing Belt	11- 1
A300 3635	Belt Clamp	11- 9
A300 3641	Fixing Plate	11- 32
A300 3646	Jogger Idler Bracket	11- 34
A300 3646	Jogger Idler Bracket	13- 32
A300 3661	Slider Guide Rod	11- 25
A300 3717	Slide Belt Holder - Stapler	13- 3
A300 3731	Slide Supporter	13- 9
A300 3732	Stapler Guide Rail	13- 33
A300 3733	Stapler Guide Rod	13- 1
A300 3736	Lift Up Spring	13- 6
A300 3757	Pad - 56x2.5x1	11- 21
A300 3759	Spring	11- 27
A300 3812	Spacer - 6x22x1.5	11- 3
A300 3812	Spacer - 6x22x1.5	13- 2
A300 3813	Shaft - 6x21.5	11- 29
A300 3815	Spring Plate	11- 33

Part No.	Description	Page and Index No.
A300 3816	Timing Belt - 900 S2M14	11- 31
A300 3822	Spacer - 11x15x1	13- 19
A300 3841	Position Sensor Bracket	11- 36
A300 3841	Position Sensor Bracket	13- 35
A300 3851	Positioning Roller Bracket	15- 8
A300 3856	Positioning Roller Shaft	15- 2
A300 3858	Stepped Screw - M4	21- 15
A300 3865	Release Spring	21- 14
A353 1191	Bushing - 12x200	9- 19
A353 2116	Paddle	15- 14
A353 2243	Lever Knob	7- 17
A353 2265	Decal - R1	7- 18
A353 2265	Decal - R1	31- 1
A353 3113	Pressure Spring	23- 14
A353 3151	Tighter Bracket	19- 22
A353 3172	Actuator Bracket	17- 2
A353 3173	Pressure Spring	17- 3
A353 3181	Exit Sensor Bracket	17- 5
A353 3192	Front Arm	17- 9
A353 3197	Rear Arm	17- 15
A353 3201	Exit Roller	17- 10
A353 3231	Bushing - 4x6x9mm	19- 4
A353 3271	Tray Shift Shaft	19- 14
A353 3272	Guide Roller	19- 16
A353 3341	Shift Drive Cam	19- 20
A353 3346	Shift Drive Shaft	19- 24
A353 3347	Shift Sensor Bracket	19- 27
A353 3351	Exit Driven Roller	17- 32
A353 3354	Driven Roller Holder	17- 26
A353 4311	Safety Switch Actuator	5- 9
A377 1182	Joint Lever	25- 5
A377 5150	IC - TC11DG03AF-0071	27- 1
A379 1141	Right Stay	25- 1
A379 1161	Left Stay	25- 3
A379 1172	Upper Joint Bracket	21- 13

Part No.	Description	Page and Index No.
A379 1211	Upper Exit Stay	17- 4
A379 1225	Upper Sensor Actuator	17- 1
A379 1311	Joint Stay	25- 4
A379 1711	Motor Bracket	23- 17
A379 2111	Exit Rooler Shaft	17- 20
A379 2112	Exit Roller Ring	17- 11
A379 2115	Reverse Roller	17- 8
A379 2211	Exit Guide	17- 30
A379 2212	Driven Roller Shaft	17- 31
A379 2213	Exit Guide Bracket	17- 25
A379 2215	Exit Mylar	17- 29
A379 2221	Lower Exit Guide	17- 22
A379 2311	Upper Guide Plate	7- 3
A379 2318	Upper Magnet Sheet	7- 4
A379 2322	Entrance Guide	5- 19
A379 2322	Entrance Guide	7- 15
A379 2323	Upper Support Plate	7- 9
A379 2326	Supporting Entrance Guide	7- 16
A379 2411	Lower Entrance Guide	9- 1
A379 2416	Entrance Sensor Bracket	9- 4
A379 2421	Vertical Transport Guide	9- 12
A379 2426	2nd Exit Lower Guide	9- 11
A379 2441	Exit Sensor Bracket	25- 9
A379 2511	Lower Guide Plate	15- 22
A379 2515	Scraper	15- 29
A379 2519	Supporting Lower Guide	15- 18
A379 2521	Exit Guide Plate	7- 2
A379 2523	Exit Guide Mylar	7- 1
A379 2525	Exit Guide Mylar - 2	7- 21
A379 2617	Paddle Roller	15- 15
A379 2631	Exit Transport Roller	15- 11
A379 2635	Front Positioning Roller	15- 12
A379 2636	Rear Positioning Roller	15- 13
A379 2711	Junction Gate	7- 7
A379 2715	Solenoid Bracket	21- 3

Part No.	Description	Page and Index No
A379 2811	Positioning Roller Arm	15- 5
A379 2820	Positioning Roller Solenoid	21- 12
A379 3111	Shift Tray Guide	19- 6
A379 3121	Exit Stay	19- 8
A379 3131	Exit Roller Cover	19- 7
A379 3132	Switch Bracket	19- 3
A379 3133	Switch Lever	19- 2
A379 3141	End Fence	19- 5
A379 3191	End Fence Cover	19- 18
A379 3311	Front Shift Guide	19- 17
A379 3316	Shift Guide Roller	19- 31
A379 3321	Rear Shift Guide	19- 12
A379 3331	Shift Tray Base	19- 13
A379 3341	Shift Tray Holder	19- 10
A379 3351	Safety Switch Bracket	19- 9
A379 3491	Shift Tray Shaft	5- 3
A379 3611	Lift Drive Bracket	23- 7
A379 3711	Timing Belt Stopper	19- 11
A379 3731	Lift Drive Shaft	17- 21
A379 3811	Shift Drive Bracket	19- 23
A379 4127	Middle Guide Seal	11- 5
A379 4131	Jogger Fence Slider	11- 11
A379 4155	Jogger Motor Bracket	13- 24
A379 4251	Slide Holder	11- 26
A379 4255	Front Stapler Positioning Fence	11- 38
A379 4256	Rear Stapler Positioning Fence	11- 20
A379 4259	Positioning Fence Mylar	11- 6
A379 4261	Positioning Guide Plate	11- 35
A379 4271	Slide Motor Bracket	13- 29
A379 4331	Paper Feed Guide Plate	11- 30
A379 4335	Cushion - 2x35x165	11- 14
A379 4401	Upper Exit Shaft	11- 15
A379 4711	Decal Misfed Removal	5- 20
A379 4711	Decal Misfed Removal	31- 2
A379 4751	Decal - R1	31- 3

Part No.	Description	Page and Index No.
A379 4752	Decal - R2	9- 2
A379 4752	Decal - R2	31- 4
A379 4761	Decal - R2 - 19x29	15- 27
A379 4761	Decal - R2 - 19x29	31- 5
A379 5716	Paper Sensor Harness	17- 7
A379 5717	Shift Sensor Harness	19- 28
A379 5719	Exit Sensor Harness	17- 28
A379 5911	Upper Harness Bracket	23- 21
A379 5915	Spring Plate	7- 19
A379 6121	Upper Hinge	5- 10
A379 6131	Lower Hinge	5- 11
A379 6161	Front Supporting Cover	19- 1
A379 6225	Cover Angle	21- 10
A379 6321	Rear Support Cover	23- 20
A422 1078	Bushing - 6x12x4mm	11- 24
A548 2113	Motor Cushion	23- 18
A548 6131	Cushion - 20x190x30	5- 23
A566 2101	Stepping Motor - DC 6.3W	23- 22
A566 2110	Tightener - Ass'y	21- 8
A593 2916	Stapler Cover	13- 16
A607 5510	Stapler Harnss - 1	13- 25
A608 4131	Lower Left Plate	13- 37
A608 4221	Stapler Stand	13- 14
A608 4311	Stapler Slide Holder	13- 4
A608 4321	Stapler Holder	13- 12
A608 4326	Guard - Slider	13- 11
A608 5714	Stapler Harness - 2	13- 15
5053 0447	Bushing - 6mm	7- 22
5053 0447	Bushing - 6mm	9- 18
5053 0447	Bushing - 6mm	11- 10
5053 0447	Bushing - 6mm	15- 4
5053 0447	Bushing - 6mm	17- 35
5201 2722	Bushing - M6x5	11- 13
5206 2671	Positioning Roller	15- 9
5316 3062	Cushion - Cutter	5- 17

Part No.	Description	Page and Index No
5403 2049	Spring Anchor	21- 7
5409 1855	Mounting Pin	7- 14
5409 1855	Mounting Pin	9- 8
5409 1855	Mounting Pin	13- 17
5413 1882	Stepped Screw	21- 6
5413 1882	Stepped Screw	25- 6
5420 4860	Bushing - 8mm	17- 16
5447 2681	Snap Ring	9- 15
5447 2681	Snap Ring	15- 10
5875 2088	Shoulder Screw - M4	11- 2
5919 2127	Positioning Roller Pulley	15- 3
5919 2132	Positioning Roller Belt	15- 1
5920 2144	Spring - Lock	7- 10
5920 2144	Spring - Lock	9- 5
5920 2144	Spring - Lock	15- 23
5940 2641	Feed-in Solenoid Spring	21- 4

Part No.	Description	Page and Index No.
0313 0050B	Philips Pan Head Screw - M3x5	21-104
0313 0050B	Philips Pan Head Screw - M3x5	23-110
0313 0060B	Philips Pan Head Screw - M3x6	19-102
0313 0060B	Philips Pan Head Screw - M3x6	23-107
0313 0060W	Philips Pan Head Screw - M3x6	11-102
0313 0060W	Philips Pan Head Screw - M3x6	13-101
0313 0080W	Philips Pan Head Screw - M3x8	13-102
0313 0100B	Philips Pan Head Screw - M3x10	13-105
0313 0100B	Philips Pan Head Screw - M3x10	17-111
0313 0100W	Philips Pan Head Screw - M3x10	11-103
0313 0140B	Philips Pan Head Screw - M3x14	11-104
0314 0050B	Philips Pan Head Screw - M4x5	15-104
0314 0060B	Philips Pan Head Screw - M4x6	5-102
0314 0060B	Philips Pan Head Screw - M4x6	7-103
0314 0060B	Philips Pan Head Screw - M4x6	9-101
0314 0060B	Philips Pan Head Screw - M4x6	13-103
0314 0060B	Philips Pan Head Screw - M4x6	15-101
0314 0060B	Philips Pan Head Screw - M4x6	17-101
0314 0060B	Philips Pan Head Screw - M4x6	19-101
0314 0060B	Philips Pan Head Screw - M4x6	21-103
0314 0060B	Philips Pan Head Screw - M4x6	23-102
0314 0060B	Philips Pan Head Screw - M4x6	25-101
0314 0060W	Philips Pan Head Screw - M4x6	11-105
0314 0080B	Philips Pan Head Screw - M4x8	23-109
0314 0120B	Philips Pan Head Screw - M4x12	5-104
0314 0120B	Philips Pan Head Screw - M4x12	19-110
0315 0080B	Philips Pan Head Screw - M5x8	25-103
0344 0060F	Philips Truss Head Screw - M4x6	5-101
0344 0060F	Philips Truss Head Screw - M4x6	11-106
0344 0060F	Philips Truss Head Screw - M4x6	13-117
0344 0060F	Philips Truss Head Screw - M4x6	25-102
0344 0080F	Philips Truss Head Screw - M4x8	5-105
0353 0060B	Philips Pan Head Screw - M3x6	7-107
0353 0060B	Philips Pan Head Screw - M3x6	9-102
0353 0060F	Philips Truss Head Screw - M3x6	7-106

Part No.	Description	Page and Index No.
0414 0082B	Binding Self Tapping Screw - M4x8	5-103
0414 0082B	Binding Self Tapping Screw - M4x8	7-101
0414 0082B	Binding Self Tapping Screw - M4x8	15-103
0414 0082B	Binding Self Tapping Screw - M4x8	17-110
0452 3008W	Binding Self Tapping Screw - M3x8	9-104
0574 0040E	Hexagon Headless Set Screw - M4x4	13-104
0574 0040E	Hexagon Headless Set Screw - M4x4	23-101
0574 0040E	Hexagon Headless Set Screw - M4x4	23-114
0623 0120E	Spring Pin - M3x12	11-107
0633 0120G	Parallel Pin - 3x12	17-106
0633 0140G	Parallel Pin - 3x14	17-107
0720 0040B	Retaining Ring - M4	7-102
0720 0040B	Retaining Ring - M4	9-103
0720 0040B	Retaining Ring - M4	11-101
0720 0040B	Retaining Ring - M4	13-106
0720 0040B	Retaining Ring - M4	15-102
0720 0040B	Retaining Ring - M4	17-109
0720 0040B	Retaining Ring - M4	19-103
0720 0040B	Retaining Ring - M4	23-106
0720 0040E	Retaining Ring - M4	11-110
0720 0060B	Retaining Ring - M6	13-107
0720 0060B	Retaining Ring - M6	17-108
0720 0060B	Retaining Ring - M6	19-106
0720 0060B	Retaining Ring - M6	23-104
0720 0060E	Retaining Ring - M6	21-105
0740 3008	Ball Bearing - 8x22x7	13-108
0741 3506	Ball Bearing - 6x12x4 mm	23-108
0802 5210	Tapping Screw - M3x8	7-105
0803 0017	Knob Screw - M4x6.5	13-113
0805 0088	Retaining Ring - M6	7-104
0805 0088	Retaining Ring - M6	17-105
0806 5019	Timing Belt - 1005XL	19-104
0807 5056	Washer - 8.1mm	23-105
0950 4008B	Philips Screw With Spring Washer - M4x8	23-115
0951 3008W	Philips Screw With Flat Washer-M3x8	13-116

Part No.	Description	Page and Index No.
0951 4006B	Philips Screw With Washer - M4x6	11-111
0951 4006B	Philips Screw With Washer - M4x6	17-102
0951 4006B	Philips Screw With Washer - M4x6	19-105
0951 4006B	Philips Screw With Washer - M4x6	21-102
0951 4006W	Philips Screw With Flat Washer-m4x6	11-108
0951 4006W	Philips Screw With Flat Washer-M4x6	13-109
0951 4008W	Philips Screw With Flat Washer-m4x8	11-109
0951 4008W	Philips Screw With Flat Washer-M4x8	13-110
1101 0328	Connector Pin Contact	27-101
1102 4201	Connector - 2p	27-102
1102 4202	Connector - 3p	27-103
1102 4203	CT Header - 4p	27-104
1102 4204	CT Header - 5p	27-105
1102 4206	Connector - 7p	27-106
1102 4208	Connector - 9p	27-107
1102 4211	CT Header - 12p	27-108
1102 4212	CT Header - 15p	27-109
1102 4620	CT Header - 3p	27-110
1102 4623	CT Connector - 6p	27-111
1102 4624	CT Connector - 7p	27-112
1102 5007	CT Header - 14p	27-113
1102 5301	Connector - 2p	27-114
1102 5325	Connector - 2p	27-115
1102 5718	Optical Fiber Connector	27-116
1103 1770	Connector - 4p	27-117
1104 0333	Fuse Holder	27-118
1104 0413	Connetctor - 28p	27-119
1105 0005	Nylon Clamp - 3n	13-112
1105 0016	Nylon Clamp - 4n	13-118
1105 0200	Clamp	11-112
1105 0200	Clamp	13-115
1105 0200	Clamp	17-103
1105 0200	Clamp	19-107
1105 0200	Clamp	21-101
1105 0200	Clamp	25-104

Part No.	Description	Page and Index No.
1105 0234	Clamp	13-114
1105 0283	Clamp	13-111
1105 0283	Clamp	19-108
1105 0310	Wire Clamp	5-106
1105 0310	Wire Clamp	23-112
1105 0328	Harness Clamp - ES-0505	17-104
1105 0437	Wire Saddle	23-111
1106 0289	Bushing- SR-5N-1	23-113
1107 0752	Fuse - 5A 250V	23-103
1107 0752	Fuse - 5A 250V	27-120
1204 1081	Microswitch	19-109
1204 1422	Dip Switch - 5HD0401	27-121
1204 2188	Interlock Switch	7-108
1400 0423	Transistor - 2SA1121C	27-122
1400 0486	Transistor - 2SA1020	27-123
1400 0678	Transistor - FC112	27-124
1401 0200	Transistor - 2SD633	27-125
1401 0282	Transistor - 2SB1020	27-126
1401 0298	Transistor - 2SC2712Y	27-127
1402 0780	Diode - 200V - 1A - 11ES2	27-128
1402 0783	Red LED - GI3PR8	27-129
1402 0874	Diode - RL2Z	27-130
1403 0519	Photocoupler - TLP621	27-131
1407 1882	TTLIC - SN74LS373NS	27-132
1407 2054	IC - TD62308F	27-133
1407 2218	TTLIC - SN74LS06NS	27-134
1407 2404	CMOS - LSI - M5M81C55FP-2	27-135
1407 3286	IC - TC74HC04AF	27-136
1407 3321	IC - MC74HC00AF	27-137
1407 3492	CPU -78C10AGF	27-138
1407 3756	TIMER - TMP82C54M-2	27-139
1407 4137	IC - MM1035XF	27-140
1408 0397	Comparator - NJM2901M	27-141
1408 0398	IC - NJ2903M	27-142
1408 0538	IC - SI8301L	27-143

Part No.	Description	Page and Index No.
1408 0599	IC - M51971EP	27-144
1408 0827	IC - TA8429H	27-145
1408 1200	IC - STK681-050	27-146
1408 1201	IC - STK6711BMK4	27-147
1503 0512	Oscillator - 3MHz	27-148
1503 0570	Oscillator - 15MHz	27-149
1600 1354	Resistor Array - 1k Ω 1W	27-150
1601 8148	Variable Resistor - 20k Ω 0.5W	27-151
1605 0226	Capacitor - 1000 pF 50V	27-152
1605 0288	Capacitor - 4700pF \pm 5%	27-153
1605 0339	Capacitor - 0.33 μ F - +80-20%	27-154
1605 0636	Capacitor - 0.1 μ F	27-155
1606 1139	Capacitor - 0.01 μ F \pm 20%	27-156
1606 1208	Capacitor - 100PF \pm 5% 50V	27-157
1606 1348	Capacitor - 0.022 μ F 50V	27-158
1607 0069	Fuse - BLO2RN2-R62-PB	27-159
1611 4101	Resistor - 100 Ω 1/4T \pm 5%	27-160
1611 4330	Resistor - 330 Ω 1/4T \pm 5%	27-161
1630 3101	Resistor - 100 Ω - 1/10W	27-162
1630 3102	Resistor - 1k Ω 1/10W \pm 5%	27-163
1630 3103	Resistor - 10k Ω 1/10W \pm 5%	27-164
1630 3104	Resistor - 100k Ω 1/10W \pm 5%	27-165
1630 3151	Resistor - 150k Ω \pm 5% 1/10W	27-166
1630 3152	Resistor - 1.5k Ω - 1/10W	27-167
1630 3201	Resistor - 200 Ω 1/10W \pm 5%	27-168
1630 3202	Resistor - 2K Ω -1/10W	27-169
1630 3222	Resistor - 2.2k Ω 1/10W \pm 5%	27-170
1630 3223	Resistor - 22k Ω - 1/10W	27-171
1630 3241	Resistor - 240 Ω 1/10W \pm 5%	27-172
1630 3302	Resistor - 3k Ω - 1/10W	27-173
1630 3333	Resistor - 33k Ω \pm 5% 1/10W	27-174
1630 3362	Resistor - 3.6k Ω \pm 5% 1/10W	27-175
1630 3431	Resistor - 430 Ω - \pm 5% - 1/10	27-176

Part No.	Description	Page and Index No.
1630 3472	Resistor - 4.7k Ω 1/10W \pm 5%	27-177
1630 3473	Resistor - 47k Ω 1/10W \pm 5%	27-178
1630 3511	Resistor - 510 Ω 1/10W \pm 5%	27-179
1630 3562	Resistor - 5.6k Ω \pm 5% 1/10W	27-180
1630 3682	Resistor - 6.8k Ω - 1/10W	27-181
1630 3753	Resistor - 75k Ω - 1/10W	27-182
1630 3821	Resistor - 820 Ω \pm 5% 1/10W	27-183
1630 3822	Resistor - 8.2k Ω 1/10W \pm 5%	27-184
1640 0102	Capacitor - 1000 μ F - \pm 20% - 10V	27-185
1640 2221	Capacitor - 220 μ F - \pm 20% 25V	27-186
1640 5100	Capacitor - 10 μ F \pm 20% 50V	27-187
1640 5101	Capacitor - 100 μ F \pm 20% 50V	27-188
1640 5109	Capacitor - 1 μ F - \pm 20% - 50V	27-189
1640 5339	Capacitor - 3.3 μ F - \pm 20% - 50V	27-190